



**RED 5** Limited

ASX Code: RED

## Dec-22 Quarterly Presentation

Mark Williams, Richard Hay, Patrick Duffy  
24 January 2023



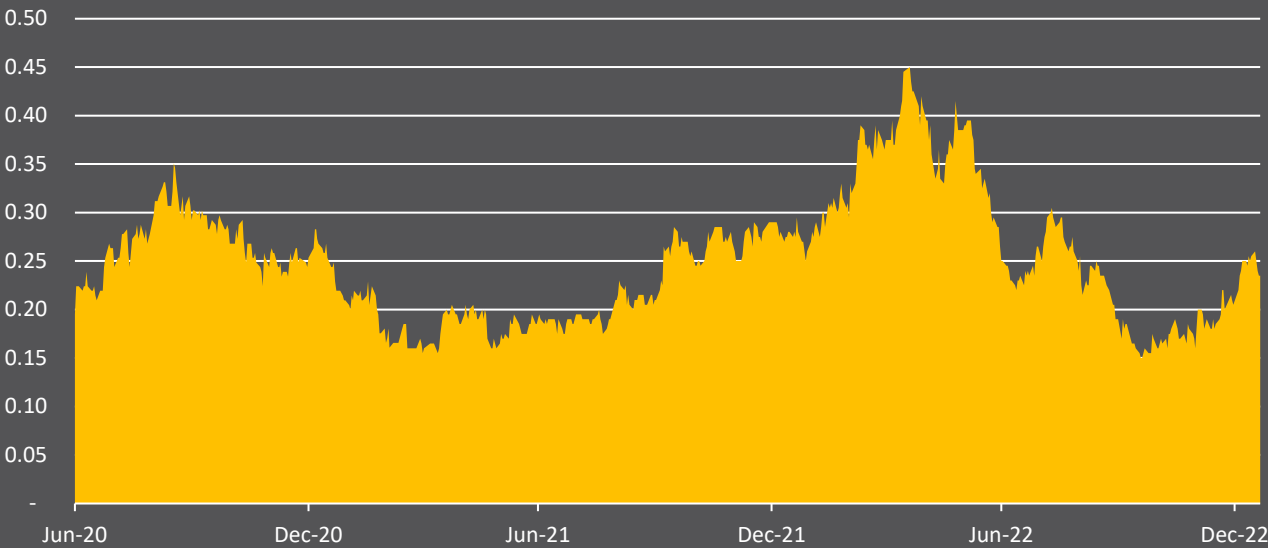
## Competent Person Statements for JORC 2012 Mineral Resource and Ore Reserves

- The information in this presentation that relates to the Mineral Resources for the King of the Hills deposit is extracted from the ASX announcement titled "Mineral Resource and Ore Reserve Update 30 June 2022" released on 7 September 2022. The information in this presentation relating to the King of the Hills regional and satellite deposits is extracted from the ASX announcement titled "Mineral Resource and Ore Reserve Update 30 June 2022" released on 7 September 2022. The information in this presentation relating to the King of the Hills Ore Reserve is extracted from the ASX announcement titled "Mineral Resource and Ore Reserve Update 30 June 2022" released on 7 September 2022.
- The information in this presentation that relates to the Mineral Resources and Ore Reserves for the Darlot Underground deposit relates to the ASX announcement titled "Mineral Resource and Ore Reserve Update 30 June 2022" released on 7 September 2022, which are available on the ASX web-site. Information in this presentation relating to Cables and Mission are from ASX announcements: "Mineral Resource and Ore Reserve Update 30 June 2022" released on 7 September 2022. Information in this presentation relating to Ockerburry Hill is extracted from the ASX announcement titled "Eastern Goldfields Regional Exploration Update" dated 16 April 2018. All announcements are available on the ASX web-site.
- Red 5 confirms that it is not aware of any new information or data that materially affects the information included in the original market announcements, and that all material assumptions and technical parameters underpinning the estimates in the relevant market announcements continue to apply and have not materially changed. The Company confirms that the form and context in which the Competent Persons findings are presented have not been materially modified from the original market announcements.

## Forward-Looking Statements

- Certain statements made during or in connection with this Investor Presentation contain or comprise certain forward-looking statements regarding RED's Mineral Resources and Reserves, exploration activities, project development operations, production rates, life of mine, projected cash flow, capital expenditure, operating costs and other economic performance and financial condition as well as general market outlook. Although RED believes that the expectations reflected in such forward-looking statements are reasonable, such expectations are only predictions and are subject to inherent risks and uncertainties which could cause actual values, results, performance or achievements to differ materially from those expressed, implied or projected in any forward-looking statements and no assurance can be given that such expectations will prove to have been correct. Accordingly, results could differ materially from those set out in the forward-looking statements as a result of, among other factors, changes in economic and market conditions, delays or changes in project development, success of business and operating initiatives, changes in the regulatory environment and other government actions, fluctuations in metals prices and exchange rates and business and operational risk management. Except for statutory liability which cannot be excluded, each of RED, its officers, employees and advisors expressly disclaim any responsibility for the accuracy or completeness of the material contained in this Investor Presentation and excludes all liability whatsoever (including in negligence) for any loss or damage which may be suffered by any person as a consequence of any information in this presentation or any error or omission. RED undertakes no obligation to update publicly or release any revisions to these forward-looking statements to reflect events or circumstances after today's date or to reflect the occurrence of unanticipated events other than required by the Corporations Act and ASX Listing Rules. Accordingly, you should not place undue reliance on any forward-looking statement.





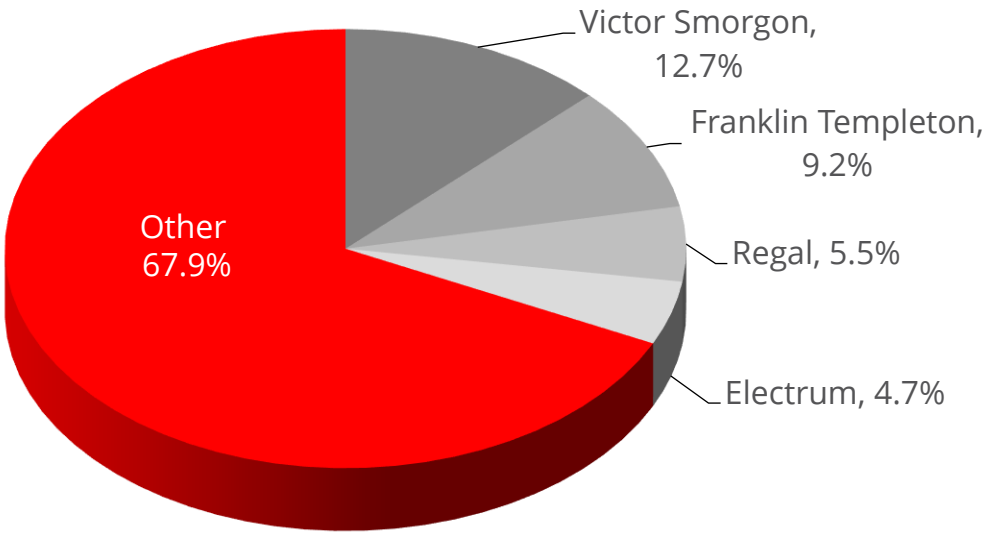
Share price at 23 January 2023	\$0.240
Shares issued	2,792.8M
Market capitalisation at 23 January 2023	\$670.3M
Cash & bullion at 31 December 2022 <sup>1</sup>	\$26.0M
Debt at 31 December 2022 <sup>1</sup>	\$164.5M
Enterprise value at 23 January 2023	\$808.8M

1. Red 5 ASX Releases: 24 January 2023.

## Our Company Vision

*“To be a successful multi-operational exploration and mining company, providing benefits to all stakeholders, through the consistent application of technical excellence, and responsible and sustainable industry practices.”*

## Shareholders



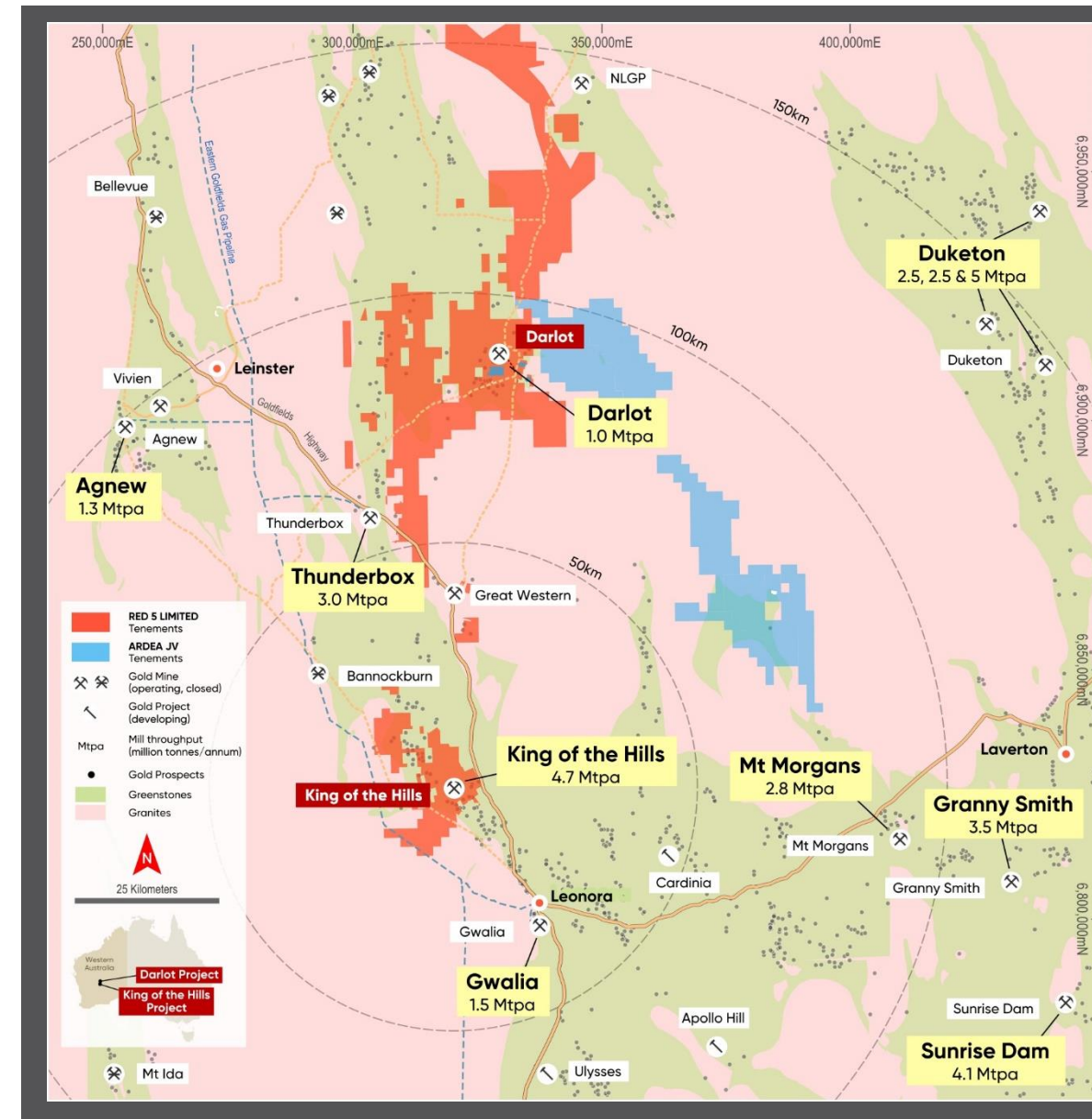
# Ramping up production of Australia's next major gold mine



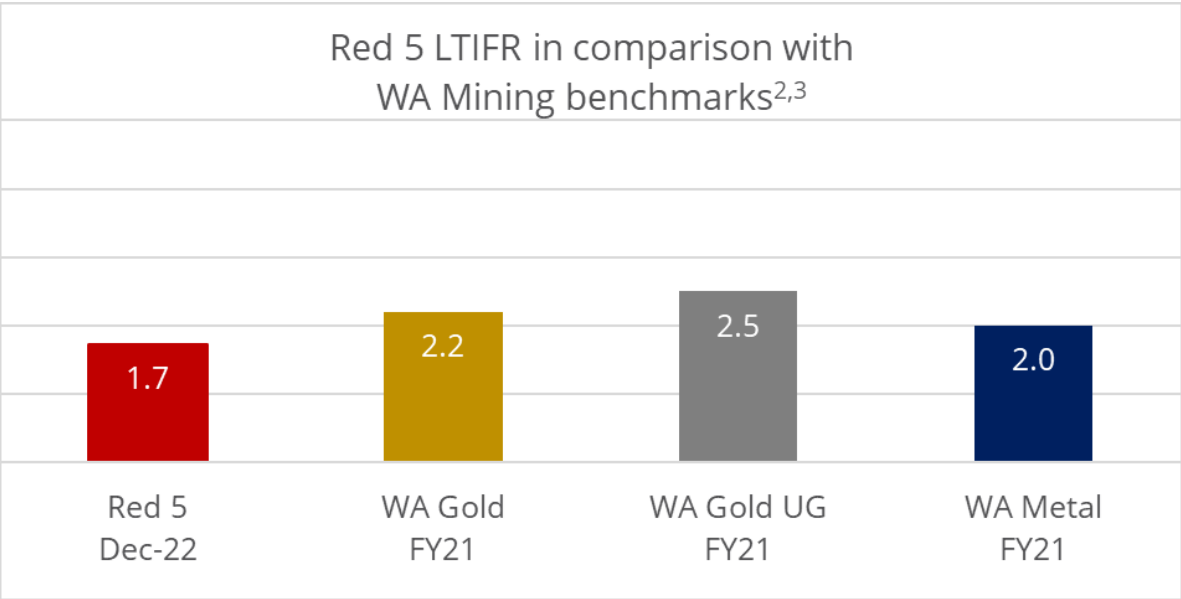
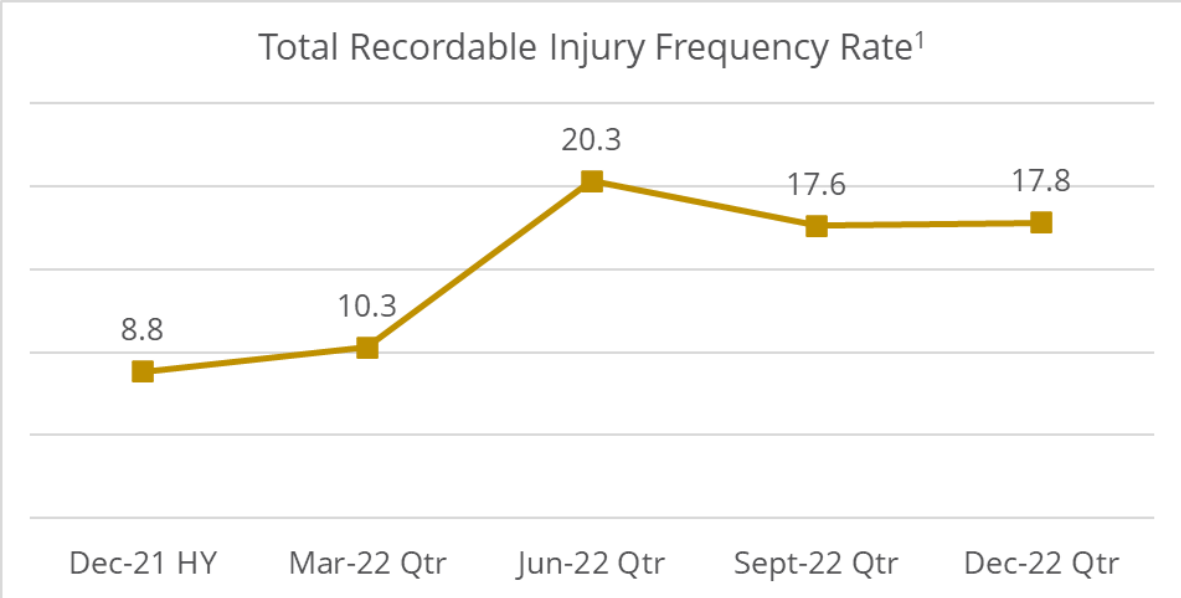
- ✓ The King of the Hills Gold Mine (KOTH) is located one of the world's safest and most prospective gold districts
- ✓ KOTH is a major Australian gold mine – Top 10-largest Ore Reserves in Australia<sup>1</sup>
  - Mineral Resource of 4.75Moz<sup>2</sup> and Ore Reserve of 2.7Moz<sup>2</sup>
  - First gold produced on 5 June 2022<sup>3</sup>
  - Commercial production declared 16 December 2022<sup>4</sup>
- ✓ Low-cost mill in highly strategic location with capacity to process satellite ore sources across the Leonora region
- ✓ Experienced management team with strong project development skill-set - ex-Evolution, Glencore, Xstrata

1. Refer to Slide 22 for sources  
2. Red 5 ASX Release: 7 September 2022

3. Red 5 ASX Release: 5 June 2022  
4. Red 5 ASX Release: 16 December 2022



# ESG – Proactive COVID preparation/management



Environmental Social and Governance Report

1. Total Recordable Injury Frequency Rate (12 month ave.), total recordable injuries per million hours worked.  
2. LTIFR = Lost Time Injury Frequency Rate (12 month ave.), the number of lost time injuries per million hours worked.  
3. Most recent statistics from <http://www.dmp.wa.gov.au/Safety/Safety-statistics-16198.aspx>



KOTH earthworks began December 2020





# SAG mill – commercial production declared 16 Dec 2022





# Darlot drilling results identified potential to upgrade Resource<sup>1</sup>



## Middle Walters South

- 6.0m at 71.4g/t
- 3.4m at 42.5g/t
- 31.1m at 5.8g/t

## Centurion Lode

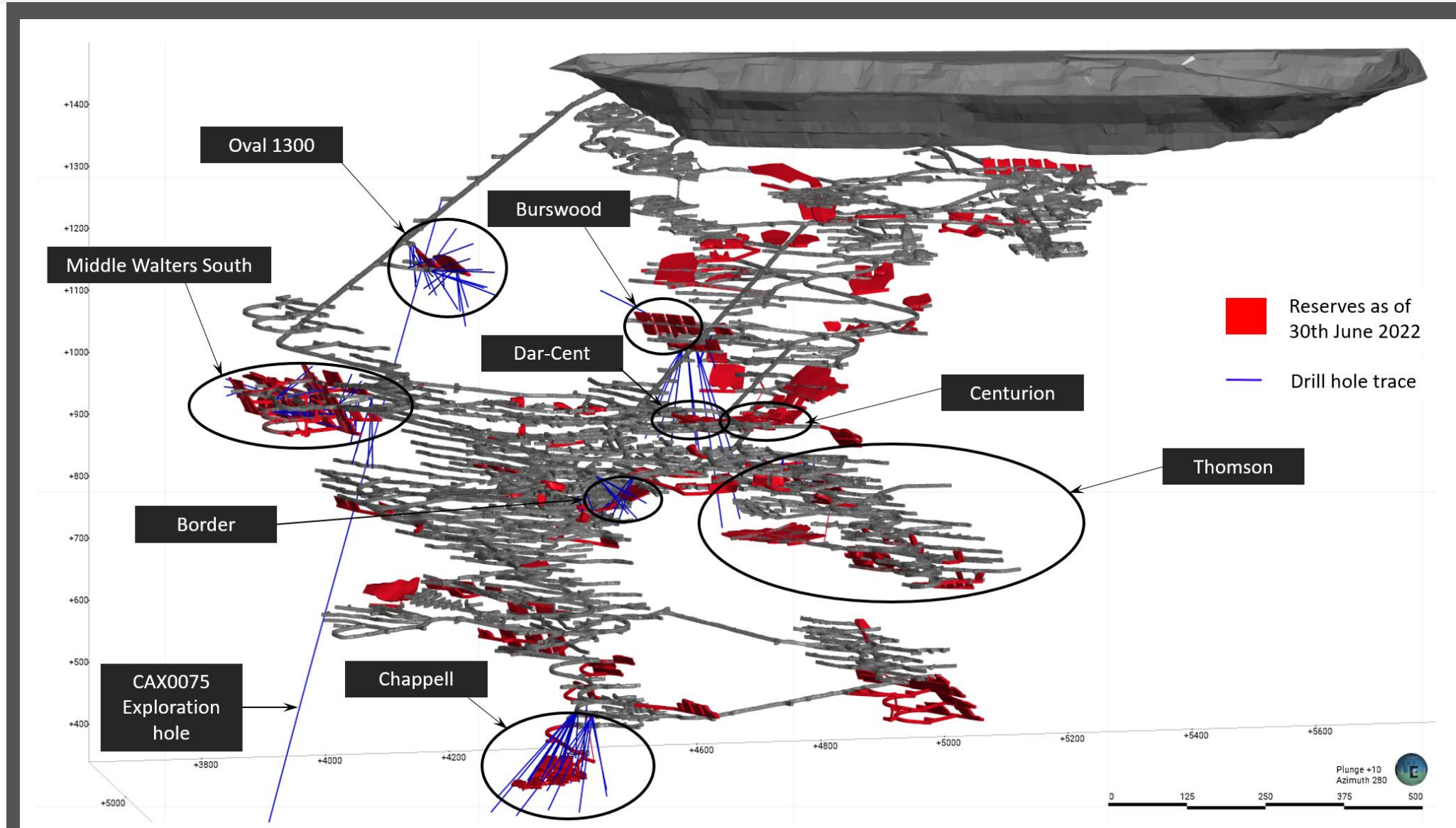
- 1.1m at 1,521.5g/t

## Dar-Cent Bulk

- 24.6m at 2.8g/t
- 82.3m at 1.5g/t

## Surface drilling at St Georges deposit

- 3.0m at 2,999.3g/t
- 1.0m at 203.6g/t



1. Red 5 ASX Release: 20 December 2022

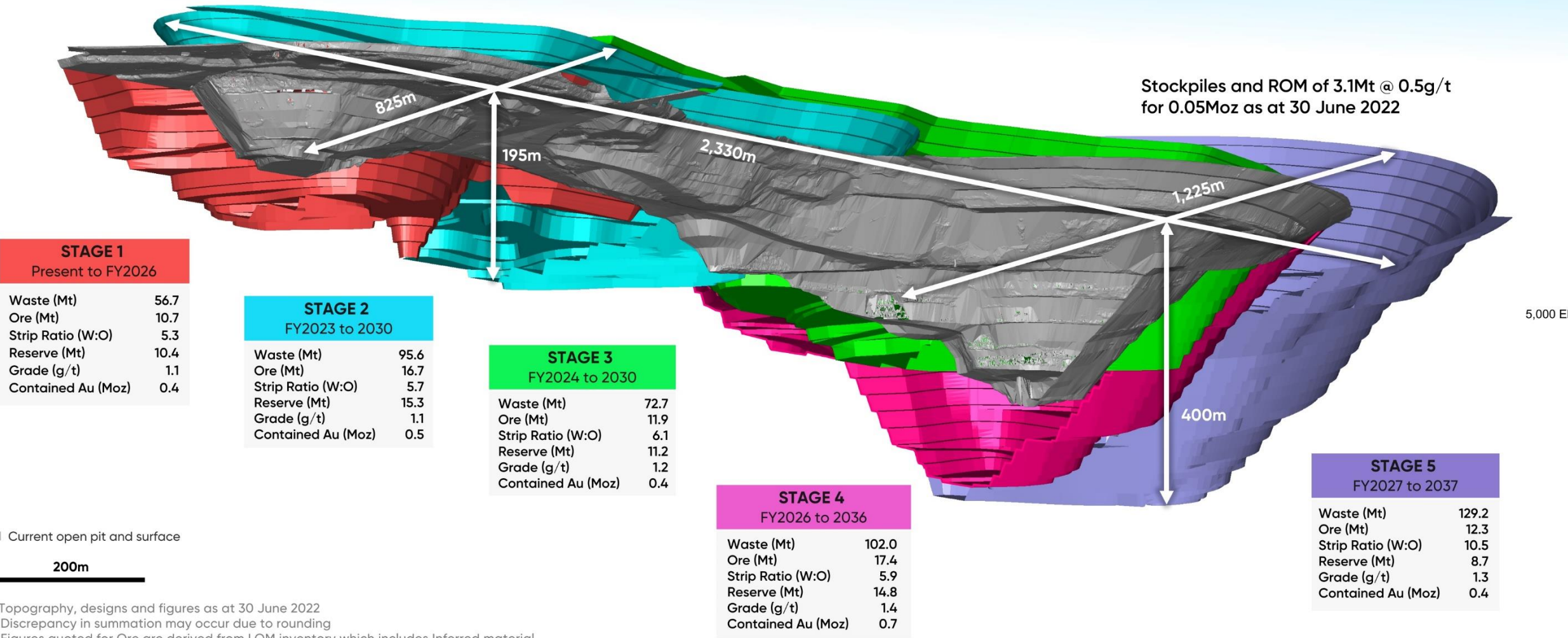


# KOTH open pit mine plan currently extends to 2037<sup>1</sup>



9,500N 10,000N 10,500N 11,000N 11,500N

## King of the Hills Open Pit Ore Reserves



1. Topography, designs and figures as at 30 June 2022  
2. Discrepancy in summation may occur due to rounding  
3. Figures quoted for Ore are derived from LOM inventory which includes Inferred material  
4. Stockpiles and ROM of 3.1Mt @ 0.5 g/t for 0.05Moz as at 30 June 2022

1. Red 5 ASX Release: 7 September 2022



# Progressing stage 1 of the open pit



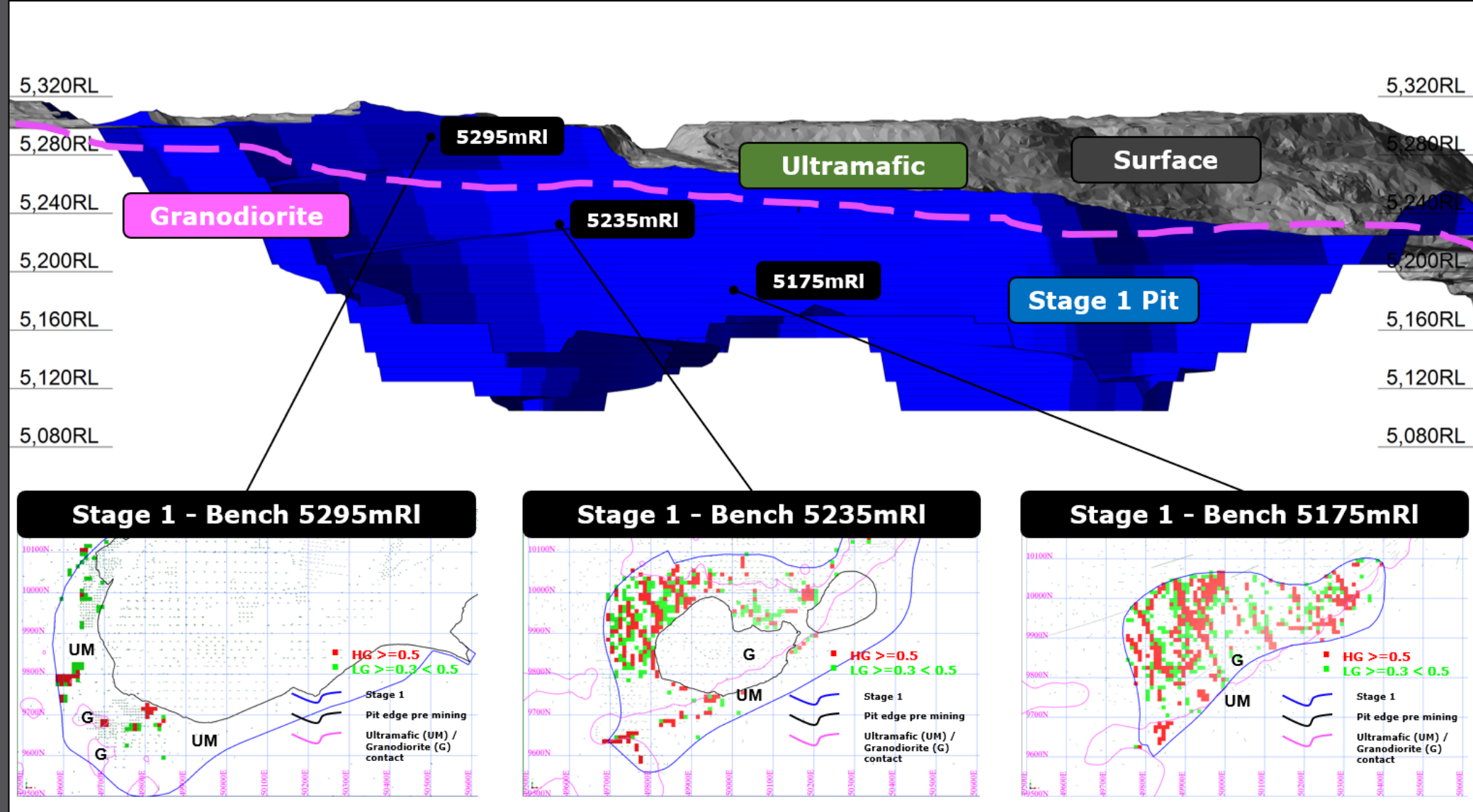


# OP now mining through the granodiorite-ultramafic contact<sup>1</sup>



Stage 1 waste cutback completed in January

As the open pit deepens, the successive benches demonstrate the progressive increase in tonnes and grade at depth



1. Red 5 ASX Release: 24 January 2023

# KOTH produced 36,260 ounces in the December Quarter



- During the quarter, the mill averaged 88.3% availability to process 1.1Mt of ore
  - *Included major planned 6-day shutdown in December*
  - *During November, run-rate of ~5Mtpa was achieved averaging 611 dry tonnes per operating hour*
- Commercial production declared on 16 December 2022

	Production (koz)	AISC (A\$/ounce)	Growth (A\$m)
HY FY2023 guidance <sup>1</sup>	90-105	1,750-1,950	5-10

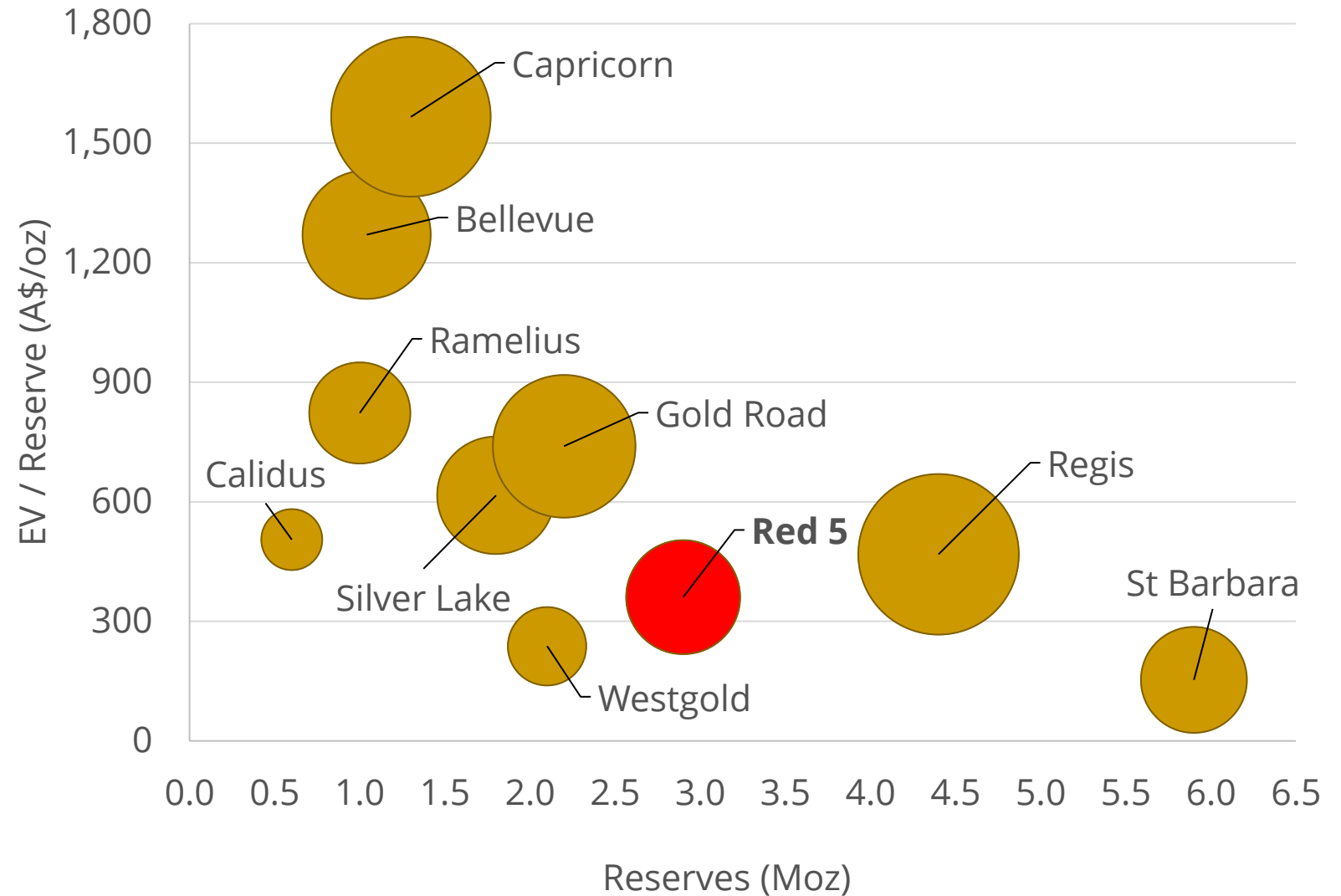
- *OP mining volumes are expected to stabilise at ~1.0-1.1M BCM per month*
- *Mining of the open pit has now reached the main contact zone between the granodiorite and ultramafic rock, where the majority of higher-grade gold mineralisation is located. Therefore feed grade is expected to increase*
- *TSF5 construction is to be completed in March 2023 Quarter*
- KOTH Process Plant Expansion Study underway
  - *Evaluate optimal mill throughput expansion and option to accelerate open pit mining*
  - *Mintrex (process plant) and Orelogy (mining) have been appointed*
  - *Study is expected to be completed in second half of FY2023*



# A standout value opportunity in the Australian gold sector



- Red 5 EV/Reserve relative to its peers
- Valuation of WA based-gold companies<sup>1</sup>
- Bubble size = Enterprise Value
- The production ramp up of KOTH is expected to position RED as a mid-tier Australian gold producer



Sources:  
1. S&P Capital IQ ; Goldnerds.com.au as at 9 January 2023





ASX Code: RED

# RED 5 Limited

## THANK YOU



Level 2, 35 Ventnor Avenue, West Perth, Western Australia  
6005 Australia



(61-8) 9322 4455



(61-8) 9481 5950





## Appendix

# Leadership Team with strong development expertise



*Red 5 has a strong and capable team, with many years of mining and development experience – the Company is well placed to deliver the KOTH Gold Mine*

## Board

**Kevin Dundo**  
Non-executive Chairman

Corporate lawyer specialising in commercial and corporate law with expertise in mining and financial services industries. Chairman since 2013.

**Mark Williams**  
Managing Director

Mining Engineer with prior experience at Orica and Xstrata, including General Manager of US\$6bn Tampakan Copper Gold Project. MD since 2014.

**Andrea Sutton**  
Non-executive Director

Chemical Engineer with >25 years experience at Rio Tinto, including Chief Executive and MD at ERA. Director since Nov-2020.

**Ian Macpherson**  
Non-executive Director

Chartered Accountant with >30 yrs in the professional services industry. Specialist in capital structuring, equity and debt raising. Director since 2014.

**Colin Loosemore**  
Non-executive Director

Geologist with >40 yrs international experience. Experienced MD for several mining companies. Director since 2014.

**Steven Tombs**  
Non-executive Director

Mining Engineer with >40 yrs international experience with major mining companies. Director since 2018.

## Management team

**Richard Hay**  
Chief Operating Officer

Geologist with 30+ years of executive and operations experience including at Barrick Gold, Evolution and Gascoyne Resources.

**Patrick Duffy**  
Chief Financial Officer

Chartered Accountant with prior experience at Glencore and Xstrata, including Director Strategy & Performance of US\$7bn Koniambo Project and CFO of US\$6bn Tampakan Project.

**Byron Dumpleton**  
Chief Geologist

Geologist with 30+ years of international experience. Prior experience at KCGM, WMC and Straits Resources.

**Frank Campagna**  
Company Secretary

CPA with over 25 years experience as Company Secretary, Chief Financial Officer and Commercial Manager for listed companies.

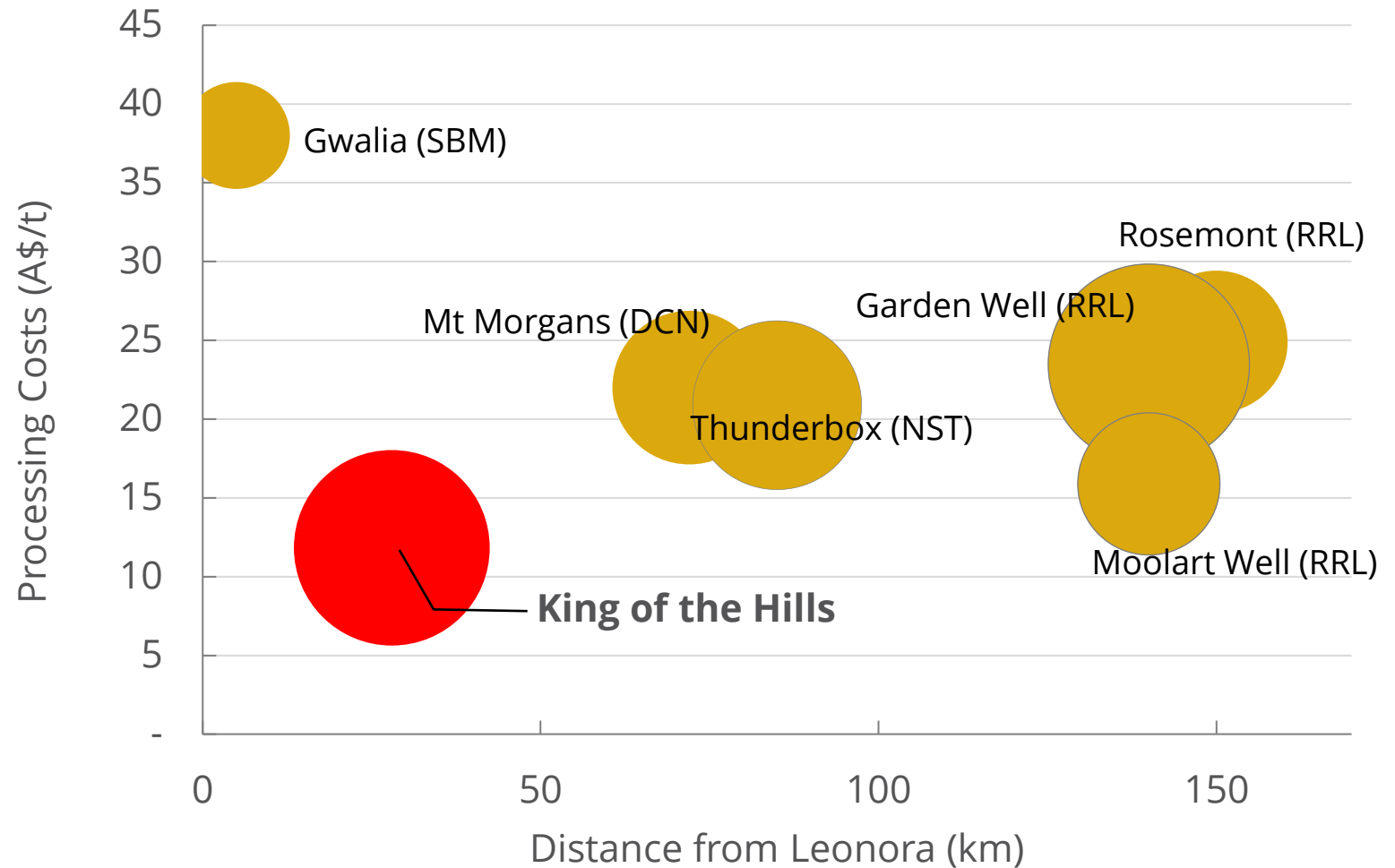


# KOTH strategic 4.7Mtpa<sup>1</sup> mill located in Eastern Goldfields



- With a processing cost of A\$12/t<sup>1</sup>, the KOTH process plant is the lowest cost mill in the Leonora district
  - *Large mill drives site-wide economies of scale*
  - *30MW hybrid gas-solar power*
- Future low-cost expansion potential
  - *Studies are underway to identify the optimal KOTH plant throughput to support future growth*
- Bubble size (graph) = annualised mill throughput

Regional process plants – mill size, unit cost and distance to Leonora



1. Red 5 ASX Release: 2 August 2021

Sources: All comparative data sourced from public company disclosures

# KOTH geology is well understood, open in all directions



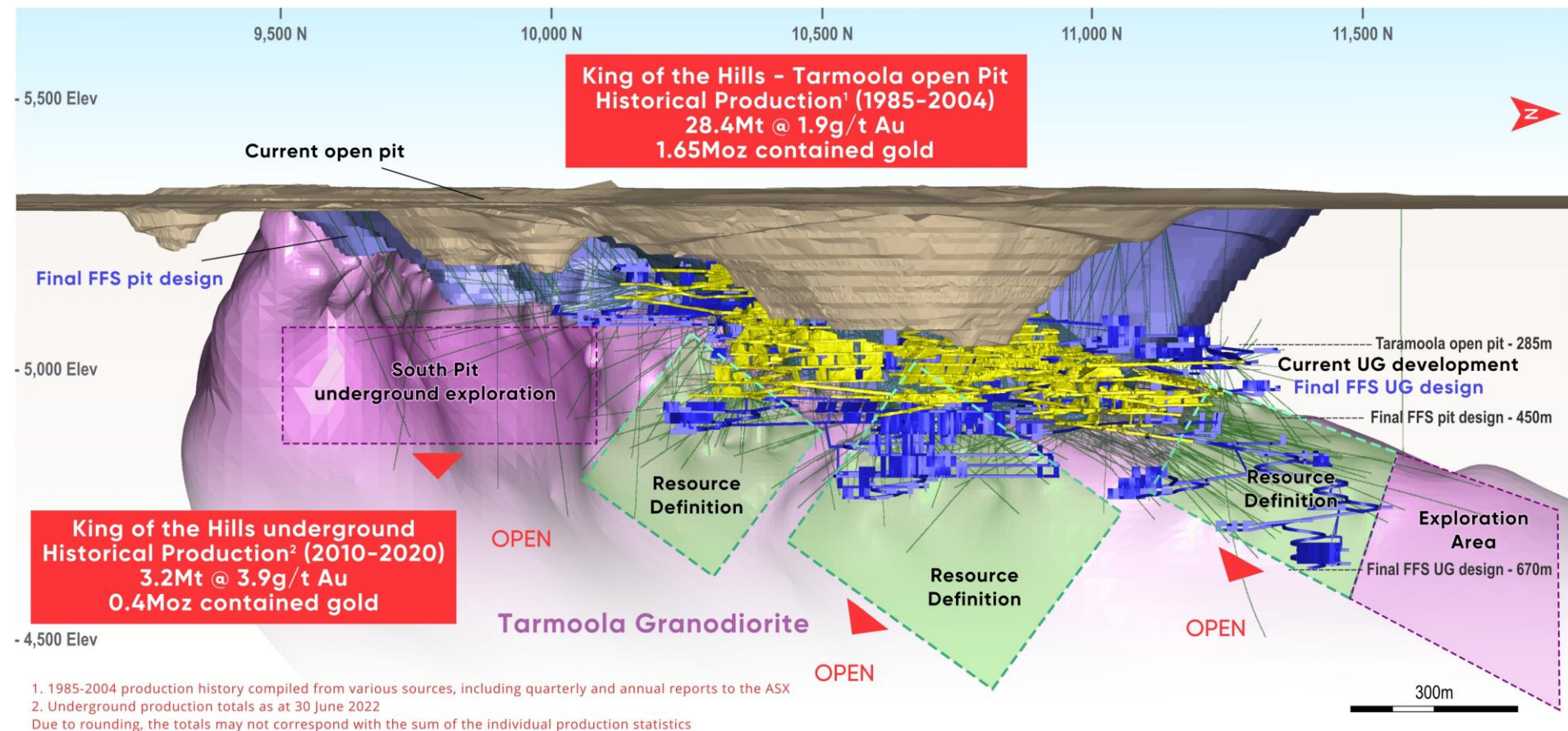
## Jun-22 Mineral Resource<sup>1</sup>

105.5Mt @ 1.4 g/t for  
4.75Moz Au

## Jun-22 Ore Reserve<sup>1</sup>

70.2Mt @ 1.2 g/t for  
2.66Moz Au

- Ore body in the contact zone of a substantial Granodiorite intrusion
  - 4km long x 2km wide
- Historical understanding from previous OP and UG mining
- Ore body remains open at depth and along strike



1. Red 5 ASX Release: 7 September 2022



# KOTH Mineral Resource of 4.75Moz<sup>1</sup>



## Total Open Pit & Underground KOTH Resource as at June 2022

Classification	Cut-off (g/t)	Mining Method	Tonnes (000t)	Gold (g/t)	Contained Gold (000oz)
Measured	0.4-1.0	OP+UG	1,330	1.2	50
Indicated	0.4-1.0	OP+UG	72,880	1.4	3,250
Inferred	0.4-1.0	OP+UG	21,070	1.6	1,090
<b>Total</b>	<b>0.4-1.0</b>	<b>OP+UG</b>	<b>95,280</b>	<b>1.4</b>	<b>4,390</b>
<b>KOTH JORC 2012 All material within A\$2,100 Pit Shell</b>					
Measured	0.4	OP	1,330	1.2	50
Indicated	0.4	OP	66,870	1.3	2,800
Inferred	0.4	OP	12,990	1.3	540
<b>Total</b>	<b>0.4</b>	<b>OP</b>	<b>81,190</b>	<b>1.3</b>	<b>3,390</b>
<b>KOTH JORC 2012 All material outside A\$2,100 Pit Shell</b>					
Indicated	1.0	UG	6,010	2.4	450
Inferred	1.0	UG	8,080	2.1	550
<b>Total</b>	<b>1.0</b>	<b>UG</b>	<b>14,090</b>	<b>2.2</b>	<b>1,000</b>



1. Red 5 ASX Release: 7 September 2022. Total Mineral Resource of 4.75Moz includes KOTH satellite pits and stockpiles.



# KOTH Ore Reserve of 2.7Moz<sup>1</sup>



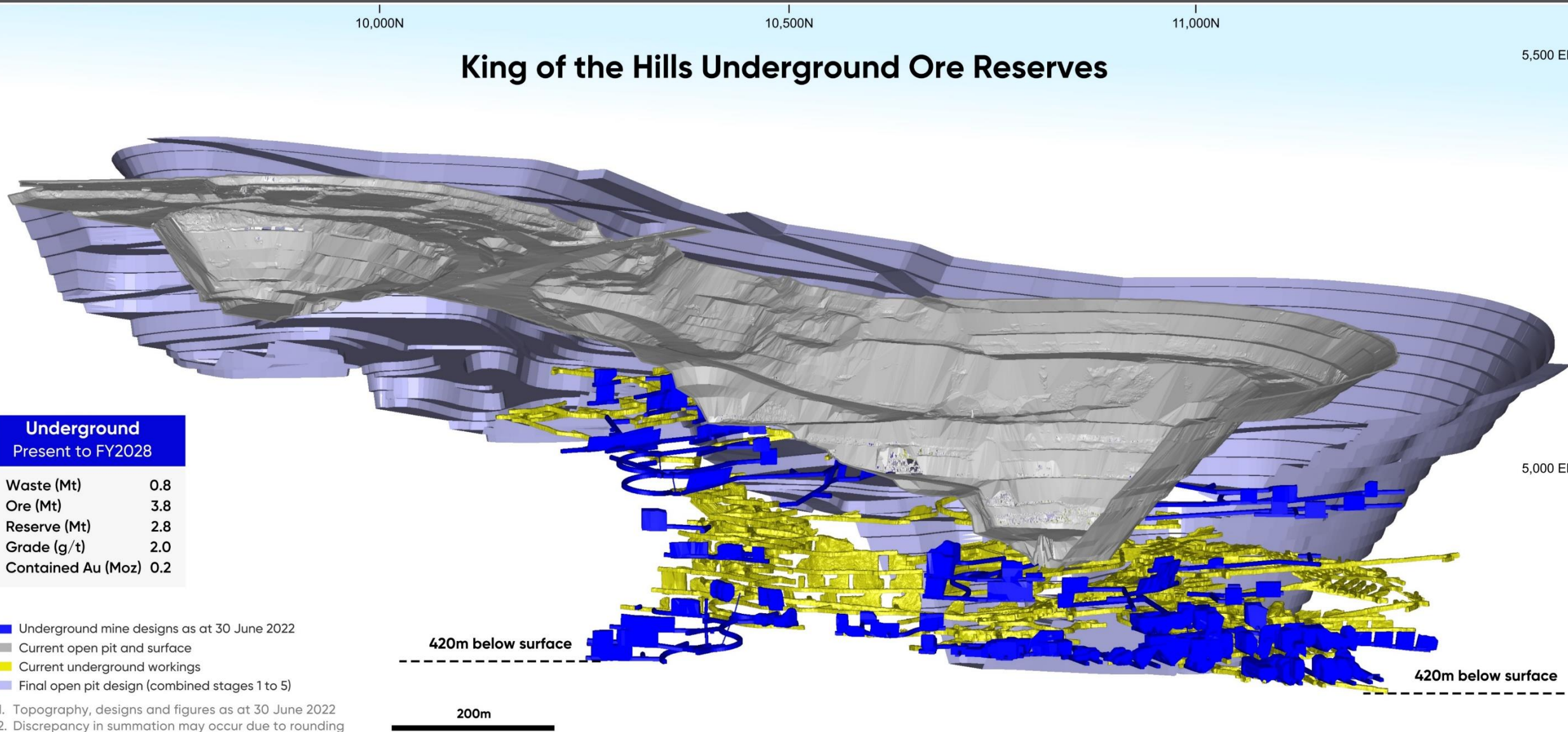
## Total KOTH Ore Reserves as at June 2022

Deposit	Mining Method	Cut-off (g/t)	JORC 2012 Classification	Tonnes (Mt)	Gold (g/t)	Contained Gold (Moz)
KOTH	Open pit	0.4	Probable	63.3	1.2	2.4
KOTH	Underground	1.3	Probable	2.8	2.0	0.2
Rainbow	Open pit	0.4	Probable	2.1	0.8	0.1
Centauri	Open pit	0.4	Probable	0.3	1.2	0.01
Cerebus & Eclipse	Open pit	0.4	Probable	1.5	1.0	0.05
Total				70.2	1.2	2.7



1. Red 5 ASX Release: 7 September 2022

# KOTH 5-year UG mine plan<sup>1</sup> is only constrained by drilling



1. Red 5 ASX Release: 7 September 2022



# Top 20 Gold Deposits in Australia



Resources				Reserves			
	Mt	g/t	Moz		Mt	g/t	Moz
Cadia	3374.0	0.4	37.6	Cadia	1280.0	0.4	17.4
Golden Mile - KCGM	545.9	1.6	27.4	Golden Mile – KCGM	280.9	1.3	11.9
Boddington	838.3	0.6	16.4	Boddington	558.3	0.7	11.6
Mallina Gold Project	250.7	1.3	10.6	Tanami	34.8	5.2	5.8
Lake Cowal	305.3	1.0	9.7	Mallina Gold Project	103.4	1.5	5.1
Tanami	80.4	3.84	9.9	Lake Cowal	138.0	1.0	4.6
Granny Smith	44.5	5.7	8.1	Gruyere 100%	109.0	1.3	4.5
Havieron	121.4	2.0	7.9	King of the Hills <sup>2</sup>	70.2	1.2	2.7
Gruyere 100%	169.5	1.4	7.4	St Ives	20.1	3.7	2.4
Tropicana	126.2	1.7	6.9	Tropicana	43.0	1.7	2.4
Gwalia	33.9	5.1	5.6	Havieron	20.0	3.6	2.3
Jundee	62.0	2.7	5.4	Granny Smith	12.6	5.4	2.2
St Ives	37.2	4.1	4.9	Gwalia	13.3	5.2	2.2
Mungari	76.1	2.0	4.9	Thunderbox Region	42.0	1.6	2.1
King of the Hills <sup>1</sup>	105.5	1.4	4.7	Duketon Region	69.0	0.9	2.0
Telfer	148.4	1.0	4.6	McPhilamys	61.0	1.0	2.0
Sunrise Dam	73.6	1.9	4.6	Fosterville	6.7	9.4	2.0
Thunderbox Region	84.3	1.6	4.4	Carosue Dam Region	29.3	1.9	1.8
Carosue Dam Region	65.7	2.1	4.2	Jundee	15.5	3.5	1.7
Agnew/EMU	19.8	5.3	3.4	Sunrise Dam	21.6	1.88	1.3

1. Red 5 ASX Release: 7 September 2022

2. Red 5's KOTH Project compared with Ore Reserves for the top 10 operating mines in Australia. Red 5 ASX Release: 7 September 2022

# Australian Top 20 Gold Deposits<sup>1</sup>



	Resources				Reserves		
	Mt	g/t	Moz		Mt	g/t	Moz
<b>Cadia</b>	Newcrest						
Measured	32.0	0.30	0.3	Proven			
Indicated	2790.0	0.37	32.8	Probable	1280.0	0.42	17.4
Inferred	552.0	0.26	4.6				
Total	3374.0	0.35	37.6	Total	1280.0	0.42	17.4
<b>Telfer</b>	Newcrest						
Measured	8.1	0.42	0.1	Proven			
Indicated	124.4	0.95	3.8	Probable	30.7	0.65	0.6
Inferred	15.9	1.31	0.7				
Total	148.4	0.96	4.6	Total	30.7	0.65	0.6
Source: Newcrest Resource & Reserve release 19 Aug 2022 - Data as at 30 June 2022							
<b>Haverton</b>	Newcrest						
Measured	0.0	0.00	0.0	Proven	0.0	0.00	0.0
Indicated	40.0	3.20	4.1	Probable	20.0	3.55	2.3
Inferred	81.4	1.40	3.7				
Total	121.4	2.01	7.9	Total	20.0	3.55	2.3
Source: Newcrest Resource & Reserve release 19 Aug 2022 - Data as at 30 June 2022							
<b>Boddington</b>	Newmont						
Measured	336.3	0.6	7.0	Proven	240.1	0.7	5.4
Indicated	498.7	0.5	9.3	Probable	318.2	0.6	6.2
Inferred	3.3	0.5	0.1				
Total	838.3	0.61	16.4	Total	558.3	0.65	11.6
Source: Newmont Resource & Reserve Supplement 2021 - Data as at 31 Dec 2021							
<b>KCGM (100%)</b>	Northern Star						
Measured	123.0	0.70	2.9	Proven	123.0	0.70	2.9
Indicated	268.9	1.84	15.9	Probable	157.9	1.80	9.0
Inferred	154.0	1.74	8.6				
Total	545.9	1.56	27.4	Total	280.9	1.32	11.9
Source: Northern Star Reserve and Resource Statement 3 May 2022 - Data as at 31 March 2022							
<b>Tanami</b>	Newmont						
Measured	24.3	2.0	2.8	Proven	12.7	5.0	2.0
Indicated	43.6	2.3	5.3	Probable	22.1	5.3	3.7
Inferred	12.5	4.5	1.8				
Total	80.4	3.84	9.9	Total	34.8	5.17	5.8
Source: Newmont Resource & Reserve Supplement 2021 - Data as at 31 Dec 2021							
<b>Tropicana</b>	AngloGold/Independence Group						
Measured	45.7	1.20	1.7	Proven	20.3	1.40	0.9
Indicated	46.5	1.60	2.4	Probable	22.7	2.00	1.5
Inferred	34.0	2.60	2.8				
Total	126.2	1.71	6.9	Total	43.0	1.75	2.4
Source: Regis Resource and Reserve Statement 24 Feb 2022 - Data as at 31 Dec 2021							
<b>Granny Smith</b>	Goldfields						
Measured	5.5	6.03	1.1	Proven	2.2	4.93	0.4
Indicated	27.9	5.88	5.3	Probable	10.4	5.58	1.9
Inferred	10.7	5.06	1.7				
Total	44.5	5.70	8.1	Total	12.6	5.47	2.2
Source: Goldfields 2021 Resource & Reserve Supplement - Data as at 31 Dec 2021							
<b>Gruyere 100%</b>	Goldfields/Gold Road						
Measured	16.6	1.07	0.6	Proven	16.7	1.04	0.6
Indicated	117.2	1.37	5.2	Probable	92.3	1.31	3.9
Inferred	35.7	1.45	1.7				
Total	169.5	1.36	7.4	Total	109.0	1.27	4.5
Source: Gold Road 2021 Resource & Reserve Supplement - Data as at 31 Dec 2021							

	Resources				Reserves		
	Mt	g/t	Moz		Mt	g/t	Moz
<b>St Ives</b>	Goldfields						
Measured	2.8	4.75	0.4	Proven	1.8	5.04	0.3
Indicated	21.7	4.34	3.0	Probable	15.4	3.99	2.0
Inferred	9.8	3.97	1.3				
Total	37.2	4.06	4.9	Total	20.1	3.74	2.4
Source: Goldfields 2021 Resource & Reserve Supplement - Data as at 31 Dec 2021							
<b>Agnew/EMU</b>	Goldfields						
Measured	0.1	5.80	0.0	Proven	0.0	0.00	0.0
Indicated	12.1	5.85	2.3	Probable	5.1	6.13	1.1
Inferred	7.6	4.53	1.1				
Total	19.8	5.34	3.4	Total	5.1	6.76	1.1
Source: Goldfields 2021 Resource & Reserve Supplement - Data as at 31 Dec 2021							
<b>Lake Cowal</b>	Evolution						
Measured	24.8	0.5	0.4	Proven	23.9	0.5	0.4
Indicated	229.9	1.0	7.3	Probable	114.1	1.2	4.2
Inferred	50.6	1.2	1.9				
Total	305.3	0.98	9.7	Total	138.0	1.03	4.6
<b>Mungari</b>	Evolution						
Measured	1.7	5.4	0.3	Proven	3.9	2.3	0.3
Indicated	54.5	1.8	3.1	Probable	16.8	1.8	1.0
Inferred	19.9	2.4	1.5				
Total	76.1	2.0	4.9	Total	20.7	1.85	1.2
Source: Evolution 2021 Resource & Reserve - Data as at 31 Dec 2021							
<b>Duketon Region</b>	Regis						
Measured	21.0	0.80	0.5	Proven	14.0	0.50	0.2
Indicated	207.0	1.00	6.6	Probable	55.0	1.00	1.8
Inferred	30.0	1.00	1.0				
Total	258.0	0.97	8.1	Total	69.0	0.90	2.0
<b>McPhilamys</b>	Regis						
Measured				Proven			
Indicated	77.0	1.10	2.6	Probable	61.0	1.03	2.0
Inferred	3.0	0.80	0.1				
Total	80.0	1.05	2.7	Total	61.0	1.03	2.0
Source: Regis Resource & Reserve Statement 21 April 2021 - Data as at 31 Mar 2021							
<b>Carosue Dam Region</b>	Northern Star						
Measured	13.9	2.20	1.0	Proven	7.1	2.10	0.5
Indicated	35.4	2.00	2.3	Probable	22.1	1.80	1.3
Inferred	16.4	2.10	1.0				
Total	65.7	2.10	4.2	Total	29.3	1.90	1.8
<b>Thunderbox Region</b>	Northern Star						
Measured	17.8	1.60	0.9	Proven	10.5	1.50	0.5
Indicated	57.6	1.60	3.0	Probable	31.5	1.60	1.6
Inferred	8.9	1.60	0.5				
Total	84.3	1.62	4.4	Total	42.0	1.60	2.1
Source: Northern Star Reserve and Resource Statement 3 May 2022 - Data as at 31 March 2022							
<b>Mallina Gold Project</b>	De Grey						
Measured	4.7	1.70	0.3	Proven	0.0	0.00	0.0
Indicated	153.4	1.30	6.6	Probable	103.4	1.50	5.1
Inferred	92.6	1.30	3.8				
Total	250.7	1.30	10.6	Total	103.4	1.50	5.1
Source: De Grey Reserve and Resource release 31 May 2022 - Data as at May 2022							

	Resources				Reserves		
	Mt	g/t	Moz		Mt	g/t	Moz
<b>Sunrise Dam</b>	AngloGold						
Measured				Proven			
Indicated				Probable			
Inferred							
Total	73.6	1.94	4.6	Total	21.6	1.88	1.3
Source: AngloGold Resource & Reserve Supplement 2021 - Data as at 31 Dec 2021							
<b>Gwalia</b>	St Barbara						
Measured	6.1	4.58	0.9	Proven	1.6	7.00	0.4
Indicated	25.3	5.09	4.1	Probable	11.7	4.90	1.4
Inferred	2.5	6.76	0.5				
Total	33.9	5.12	5.6	Total	13.3	5.20	2.2
Source: St Barbara Reserve & Resource Statement 26 August 2021 - Data as at 30 June 2021							
<b>Jundee</b>							
Measured	2.5	1.10	0.1	Proven	2.5	1.10	0.1
Indicated	42.9	2.90	4.0	Probable	13.0	3.90	1.7
Inferred	16.7	2.50	1.3				
Total	62.0	2.70	5.4	Total	15.5	3.50	1.7
Source: Northern Star Reserve and Resource Statement 3 May 2022 - Data as at 31 March 2022							
<b>Kanowna</b>							
Measured	4.8	3.20	0.5	Proven	2.6	2.60	0.2
Indicated	18.5	2.60	1.6	Probable	7.2	2.50	0.6
Inferred	14.6	2.10	1.0				
Total	38.0	2.50	3.0	Total	9.8	2.50	0.8
Source: Northern Star Reserve and Resource Statement 3 May 2022 - Data as at 31 March 2022							
<b>Big Bell</b>	Westgold						
Measured	5.6	3.30	0.6	Proven	4.9	2.95	0.5
Indicated	10.8	2.56	0.9	Probable	5.0	2.64	0.4
Inferred	4.7	2.57	0.4				
Total	21.0	2.76	1.9	Total	9.9	2.79	0.9
Source: Westgold Resource & Reserve Release 29 September 2021 - Data as at 30 Jun 2021							
<b>Fosterville</b>	Kirkland Lake						
Measured	1.1	4.43	0.2	Proven	1.2	17.31	0.7
Indicated	10.2	5.22	1.7	Probable	5.4	7.67	1.3
Inferred	9.3	5.72	1.7				
Total	19.5	5.42	3.4	Total	6.7	9.44	2.0
Source: Kirkland Lake 2021 40F Report - Data as at 31 December 2021							
<b>King of the Hills</b>	Red 5						
Measured	2.5	0.91	0.1	Proven	2.4	0.80	0.6
Indicated	80.4	1.36	3.5	Probable	67.8	1.20	2.6
Inferred	22.7	1.59	1.2				
Total	105.6	1.40	4.75	Total	70.2	1.20	2.7
Source: Red 5 2021 Annual Report, Resource update 30 June 2022							

1. Sources detailed in the table