



**RED5** Limited

ASX Code: RED

[www.red5ltd.com](http://www.red5ltd.com)

# Investor Presentation

17 Aug 2020

*Mark Williams, Managing Director*

# Competent Person's Statement and Disclaimer

## Competent Person Statement for Exploration Results

The information in this presentation which relates to Exploration Results is extracted from ASX announcements (available on the ASX web-site at [www.asx.com.au](http://www.asx.com.au)); "Red 5 commences significant drilling program to unlock large-scale bulk mining opportunity at King of the Hills" released by the Company on 8 November 2018 and is available on the ASX web-site, "Further outstanding results from infill drilling program" dated 4 July 2019 and is available on the ASX web-site, "Further outstanding results at King of the Hills" released on 29 October 2019 and is available on the ASX web-site, "Underground drilling results at King of the Hills" released on 8 November 2019 and is available on the ASX web-site, "Deeper drilling at King of the Hills" released on 18 December 2019 and is available on the ASX web-site, "King of the Hills continues growth with positive new results" released on 23 January 2020 and is available on the ASX web-site, "Regional Near-Mine Exploration Highlights Potential for Additional Resource Growth at King of the Hills", released on 24 September 2019 and is available on the ASX web-site, "Additional high-priority near-mine regional targets identified at King of the Hills as regional exploration gains momentum" released 15 April 2019 and is available on the ASX web-site, "Eastern Goldfields Regional Exploration Update", released on 16 April 2018 and is available on the ASX web-site, "New resource drilling programs to commence around Darlot Gold Mine", released on 13 December 2019 and is available on the ASX web-site, "Resource and Reserve growth to support long-term Mining Hub Strategy at Darlot Gold Mine" released on 10 February 2020 and is available on the ASX web-site, "Additional Resources defined for satellite open pit deposits at King of the Hills" released on 6 May 2020 and is available on the ASX web-site. Red 5 confirms that the form and context in which the Competent Person's findings are presented have not been materially modified from those ASX announcements.

## Competent Person Statements for JORC 2012 Mineral Resource and Ore Reserves

The information in this presentation that relates to the Mineral Resources at the Siana open pit is extracted from the report titled Siana Gold Project – Open Pit Mining Review and Reserve Update, released on 24 September 2015 and is available on the ASX web-site, figures quoted are reported as at 30 June 2018. The information in this presentation that relates to the Mineral Resources at the Mapawa Project is extracted from the report titled Maiden 289,000oz Gold Resource for Mapawa LSY Deposit, dated 21 October 2015 and is available on the ASX web-site. The information in this presentation that relates to Mineral Resources for the Siana Underground is extracted from the report titled Siana Underground Mineral Resource dated 23 February 2016 and is available on the ASX web-site. The information in this presentation that relates to Ore Reserves at the Siana Underground is extracted from the report titled Siana Gold Project: Underground Mine Approved for Development Following Completion of Positive Updated Feasibility Study dated 14 June 2016 and is available on the ASX web-site. The information in this presentation that relates to the Mineral Resources and Ore Reserves for the Darlot Underground deposit relates to the ASX announcement titled "Resource and Reserve growth to support long-term Mining Hub Strategy at Darlot Gold Mine" dated 10 February 2020, which are available on the ASX web-site. The information in this presentation that relates to the Mineral Resources for the King of the Hills deposit is extracted from the ASX announcement titled "King of the Hills Mineral Resource increases to 4.1Moz" released on 19 March 2020. The information in this presentation relating to the King of the Hills regional deposits is extracted from the ASX announcement titled "Maiden JORC open pit Resources defined for near mine regional deposits at King of the Hills" dated 1 May 2019. The information in this presentation relating to the King of the Hills Open Pit Ore Reserve is extracted from the ASX announcement titled "Maiden 1.45Moz open pit Ore Reserve for King of the Hills Confirms Exceptional Bulk Mining Opportunity" dated 1 August 2019. Information in this presentation relating to Great Western and Cables and Mission are from ASX announcements: "Option Agreement signed with Terrain Minerals to purchase the Great Western gold deposit", dated 11 November 2019, "Completion of Acquisition of Great Western Project", dated 9 April 2020, and "Option Agreement signed to purchase Cables and Mission gold deposits", dated 2 December 2019, which are available on the ASX web-site.

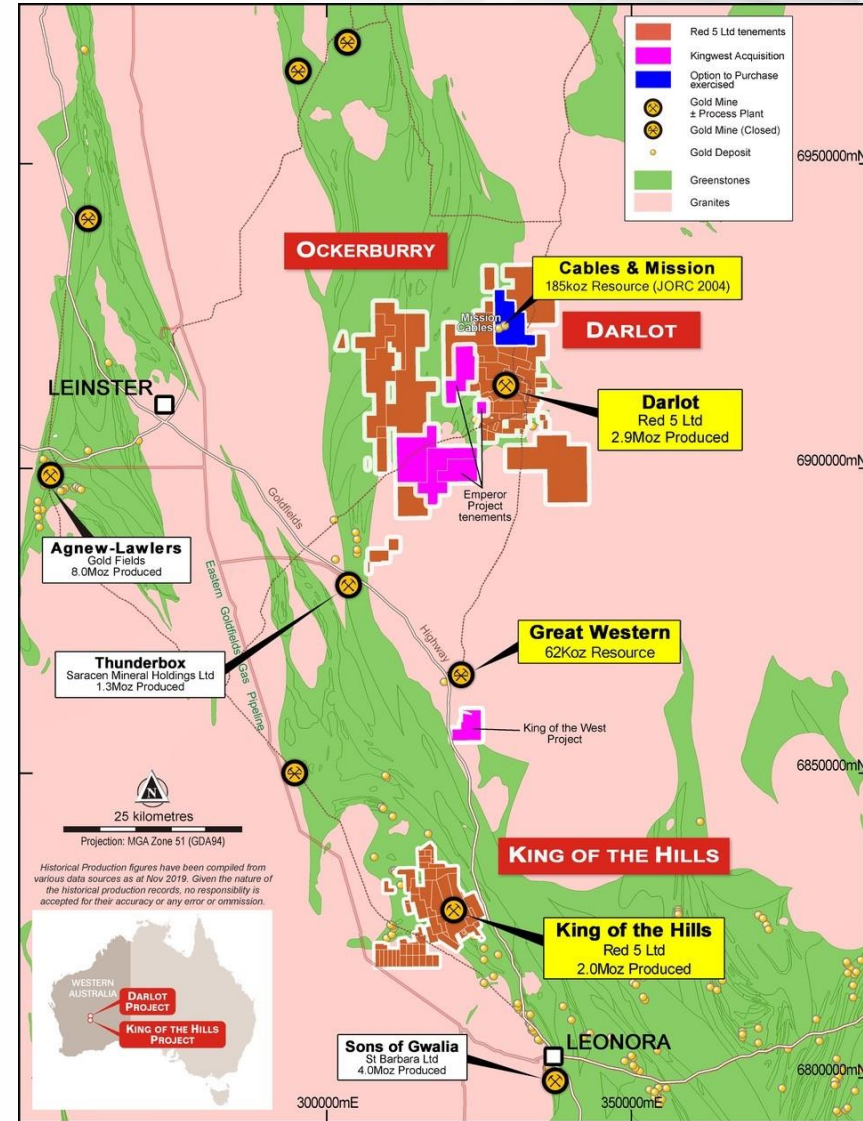
## Forward-Looking Statements

Certain statements made during or in connection with this presentation contain or comprise certain forward-looking statements regarding Red 5's Mineral Resources and Reserves, exploration activities, project development operations, production rates, life of mine, projected cash flow, capital expenditure, operating costs and other economic performance and financial condition as well as general market outlook. Although Red 5 believes that the expectations reflected in such forward-looking statements are reasonable, such expectations are only predictions and are subject to inherent risks and uncertainties which could cause actual values, results, performance or achievements to differ materially from those expressed, implied or projected in any forward looking statements and no assurance can be given that such expectations will prove to have been correct. Accordingly, results could differ materially from those set out in the forward-looking statements as a result of, among other factors, changes in economic and market conditions, delays or changes in project development, success of business and operating initiatives, changes in the regulatory environment and other government actions, fluctuations in metals prices and exchange rates and business and operational risk management. Except for statutory liability which cannot be excluded, each of Red 5, its officers, employees and advisors expressly disclaim any responsibility for the accuracy or completeness of the material contained in this presentation and excludes all liability whatsoever (including in negligence) for any loss or damage which may be suffered by any person as a consequence of any information in this presentation or any error or omission. Red 5 undertakes no obligation to update publicly or release any revisions to these forward-looking statements to reflect events or circumstances after today's date or to reflect the occurrence of unanticipated events other than required by the Corporations Act and ASX Listing Rules. Accordingly you should not place undue reliance on any forward looking statement.

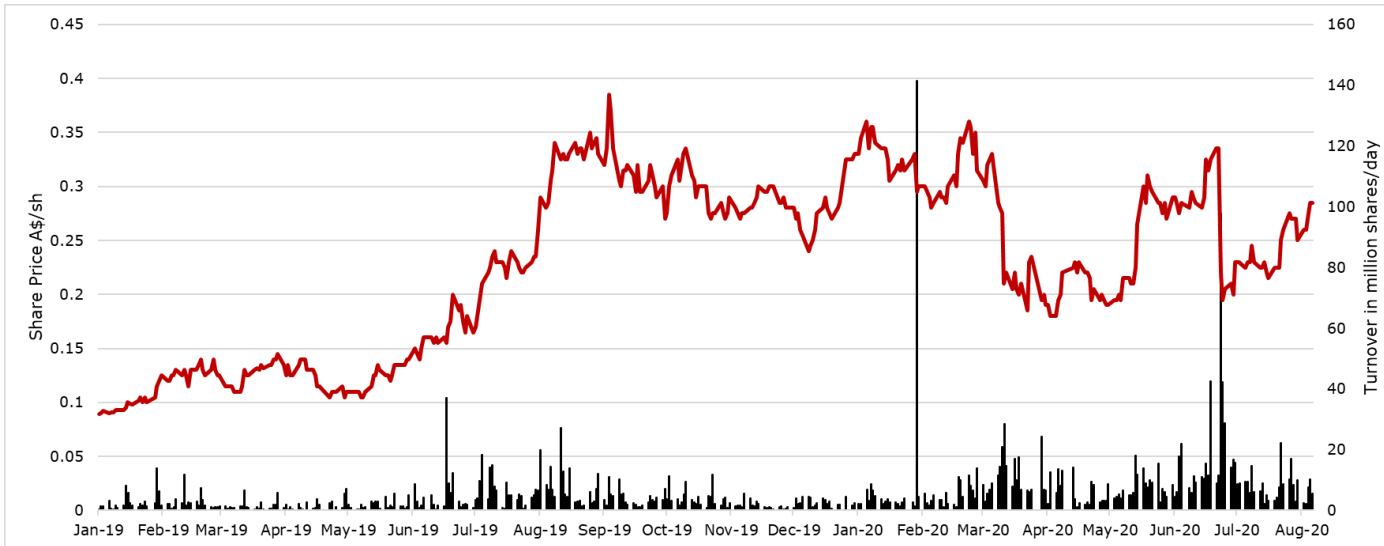
# Red 5 Limited – a standout growth opportunity

- ✓ Red 5 has two gold mines in one of the World's most attractive gold regions
- ✓ King of the Hills (KOTH) is a Top 20 Australian gold deposit<sup>3</sup> (Mineral Resource of 4.1Moz<sup>1</sup>)
- ✓ KOTH PFS was 140kozpa (open pit only) with 10-year LOM<sup>2</sup>. FFS is expected to reveal a significant new Australian gold mine – due in September.
- ✓ Extensive exploration potential at both Darlot and KOTH
- ✓ Well funded for development finance with A\$122 million of cash and equivalents at 30 June 2020
- ✓ Experienced Operating Team with unique project development skillset

1. Red 5 ASX Release: 19 March 2020
2. Red 5 ASX Release: 1 August 2019 for KOTH PFS (Open Pit and Rainbow)
3. Refer to Slide 22



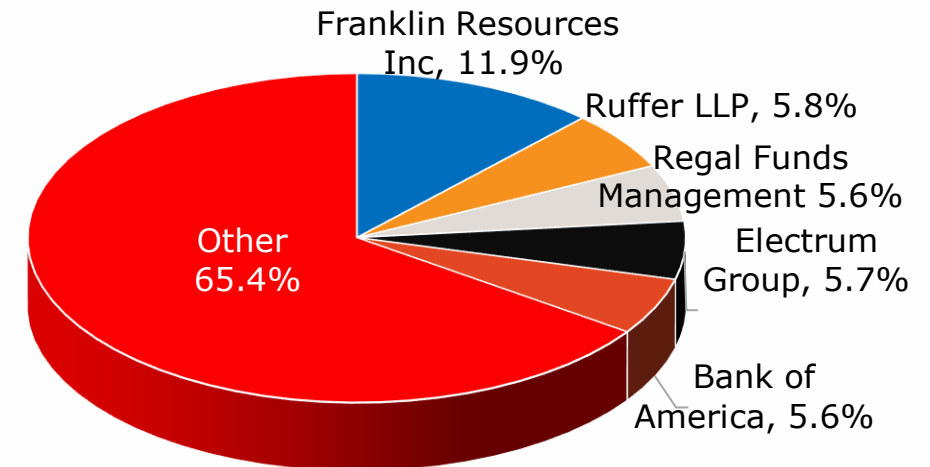
# Red 5 Limited – corporate profile



**Our Company Vision**  
*"To be a successful multi-operational exploration and mining company, providing benefits to all stakeholders, through the consistent application of technical excellence, and responsible and sustainable industry practices."*

## Shareholders

|   |          |
|---|----------|
| Share price at 14 August 2020               | \$0.280  |
| Shares outstanding                          | 1,959.6M |
| Market capitalisation                       | \$548.7M |
| Cash & bullion at 30 June 2020 <sup>1</sup> | \$122.3M |
| Debt at 30 June 2020 <sup>1</sup>           | \$12.0M  |
| Enterprise value at 14 August 2020          | \$438.4M |



1. Debt and cash as at 30 June 2020, unaudited



# Strong leadership team with operating expertise

*Red 5 has a strong and capable team, with many years of mining and development experience at both Red 5 and in prior multi-billion international development projects – the Company is well placed to deliver the future KOTH development*

## Board

### Kevin Dundo

Non-executive Chairman

Corporate lawyer specialising in commercial and corporate law with expertise in mining and financial services industries. Chairman since November 2013.

### Mark Williams

Managing Director

Mining Engineer with prior experience with Orica and Xstrata, including General Manager of US\$6bn Tampakan Copper Gold Project in the Philippines. MD of Red 5 since April 2014.

### Ian Macpherson

Non-executive Director

Chartered Accountant with over 30 years in the professional services industry. Specialist in capital structuring, equity and debt raising. Director since April 2014.

### Colin Loosemore

Non-executive Director

Geologist with over 40 years international experience. Previous MD experience for a number of mining companies. Director since December 2014.

### Steven Tombs

Non-executive Director

Mining Engineer with over 40 years international experience with major mining companies. Previous GM of Siana and Darlot operations. Director since August 2018.

## Management team

### Brendon Shadlow

General Manager

Mining Engineer with prior experience at Goldfields and Xstrata. Responsible for the Darlot and KOTH mining operations.

### John Tasovac

Chief Financial Officer

Chartered Accountant with prior experience at BHP and Xstrata, including CFO of US\$5bn Las Bambas Project and Xstrata Copper South America Projects Division.

### Byron Dumpleton

Chief Geologist

Geologist with 30+ years of international experience. Prior experience at KCGM, WMC and Straits Resources.

### Patrick Duffy

Chief Corporate Development Officer

Chartered Accountant with prior experience at Glencore and Xstrata, including Director Strategy & Performance of US\$7bn Koniambo Project and CFO of US\$6bn Tampakan Project.

### Cameron Pocknee

Project Development Manager

25+ years of international operational experience with MIM and Xstrata. Previous GM of Siana and is responsible for KOTH FFS.

### Warren King

KOTH Project Manager

Engineer with prior experience constructing gold projects in Australia, Indonesia and Africa. Responsible for construction of KOTH Project.

### Frank Campagna

Company Secretary

CPA with over 25 years experience as Company Secretary, Chief Financial Officer and Commercial Manager for listed companies.

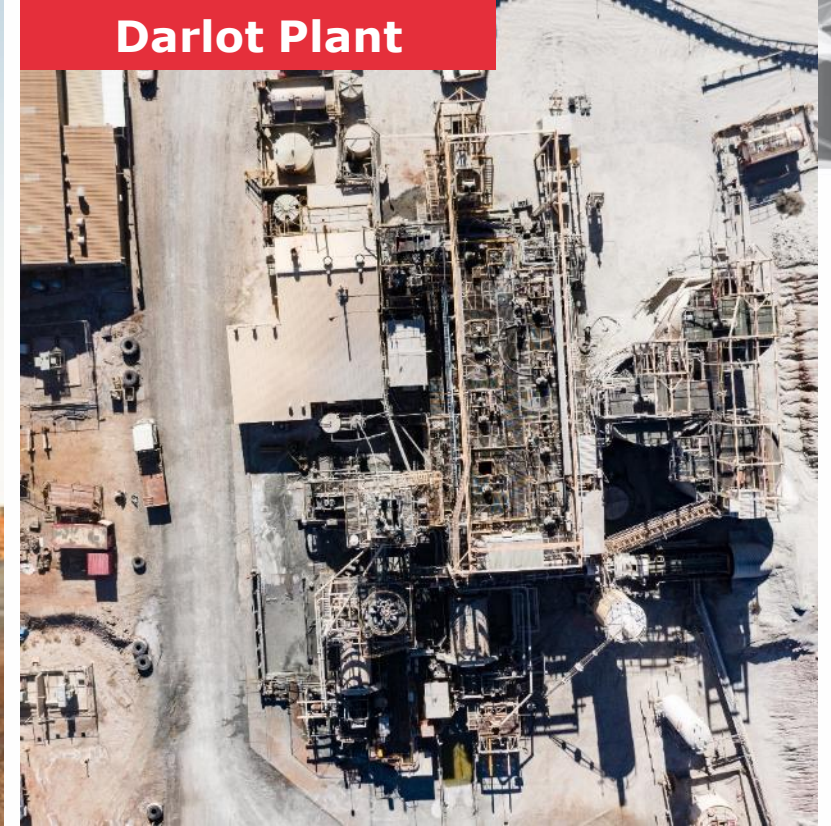
**KOTH UG Mine**



**Darlot UG Mine**



**Darlot Plant**



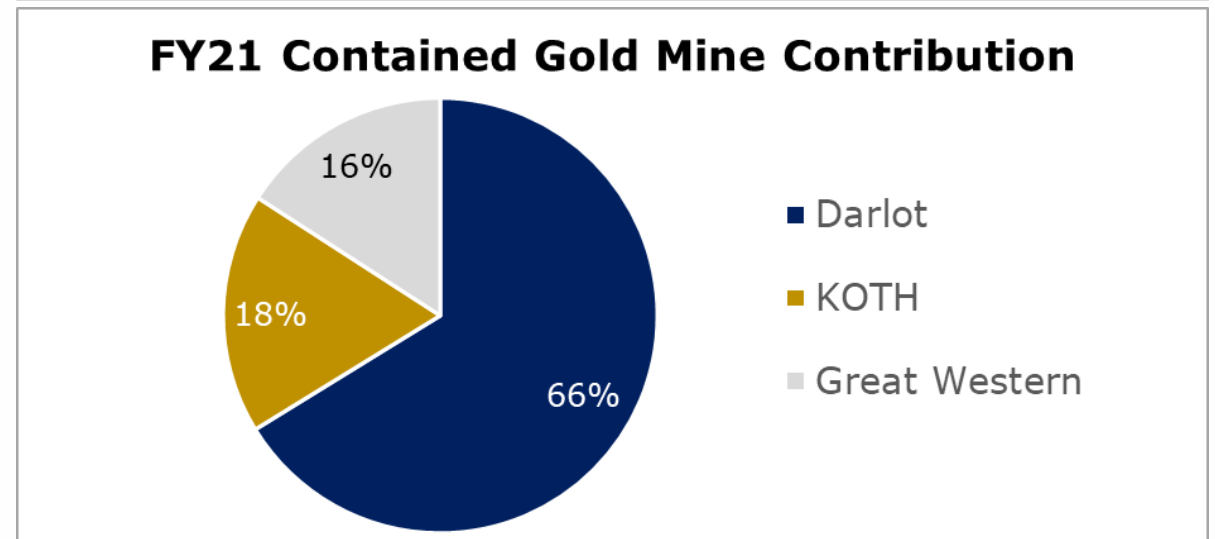
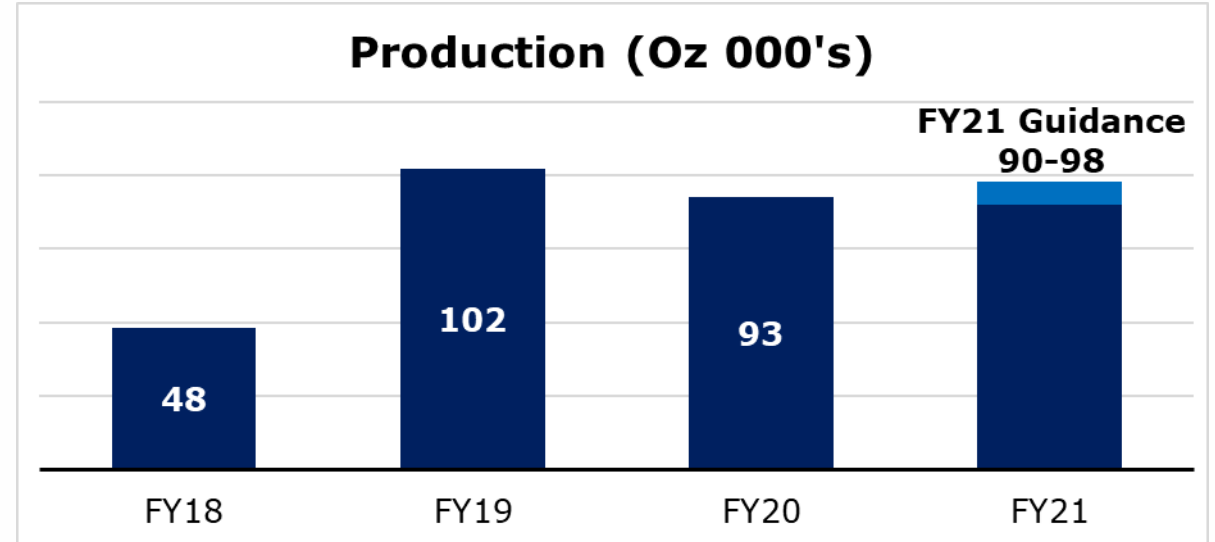
**2020: two producing mines, one plant**

---

# Darlot transitional production strategy

- ✓ FY21 production guidance<sup>1</sup> of 90,000 – 98,000oz (FY20 actual: 92,783oz)
- ✓ FY21 AISC guidance<sup>1</sup> of A\$1,830 – A\$2,030/oz (FY20 actual: A\$1,798/oz)
- ✓ KOTH “truck-to-Darlot” underground mining scaled-down in Dec 2020 Quarter, pending the planned KOTH bulk mine operation
- ✓ New open pit at Great Western to start mining in Dec 2020 Quarter – bulk of Great Western mill feed and cash contribution to be in FY22 and FY23
- ✓ Progress towards two stand-alone gold processing centres at Darlot and KOTH

1. Red 5 ASX Release: 24 June 2020





# Multiple opportunities to extend Darlot

## Darlot Gold Mine <sup>1</sup>

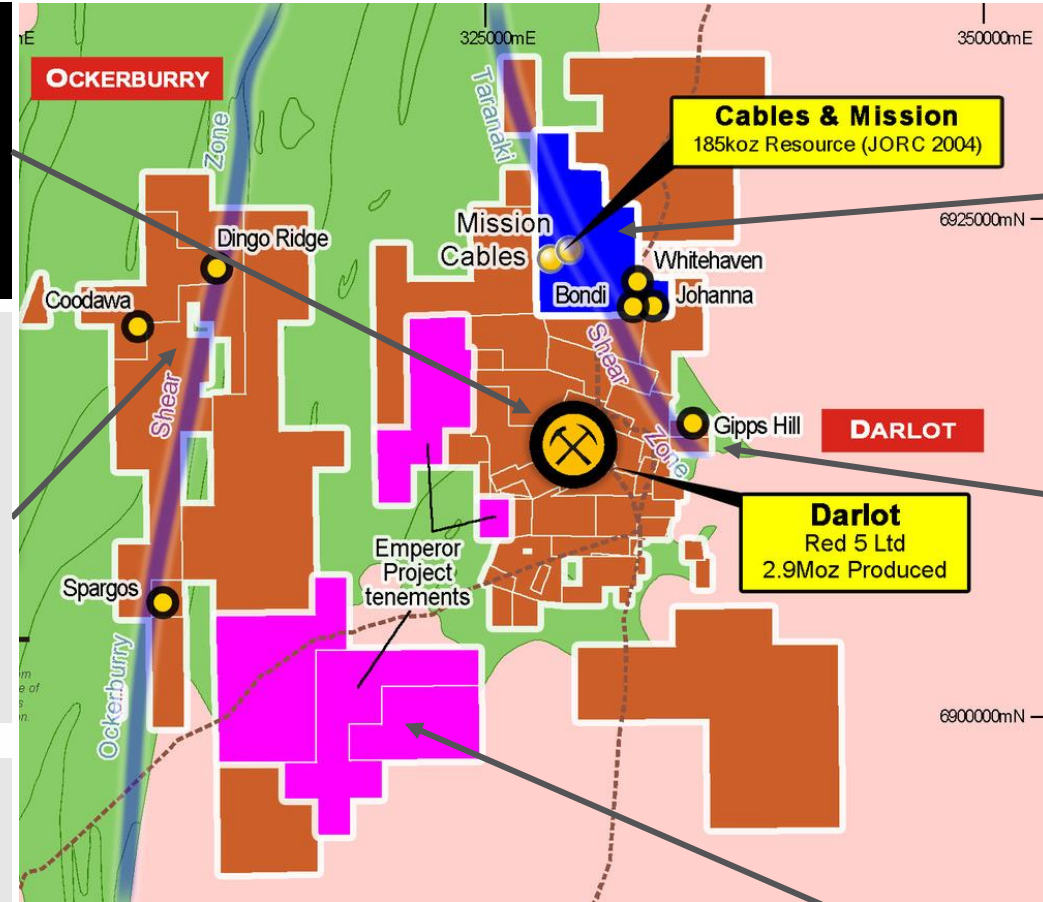
- Resource 10.8Mt @ 3.5g/t Au for 1.2Moz
- Reserve 2.6Mt @ 3.3g/t Au for 275koz
- 71,000m UG and surface drill program

## Ockerburry Hill (Dingo Ridge) <sup>2</sup>

- 4km-long, 500m wide mineralised zone proximal to the Ockerburry fault corridor
- Mineralisation untested below 150m
- Historical drill results include<sup>2</sup>:
  - 5m @ 8.1g/t Au (ADAC0194)
  - 4m @ 9.7g/t Au (MVAC1203)

## Great Western <sup>3</sup>

- Resource of 709kt @ 2.7g/t Au for 62koz<sup>3</sup> - ~60km south of Darlot mill
- Drilling defined strike length of 450m, depth of 200m, mineralisation open at depth
- Part of FY21 Mine Plan



## Cables & Mission <sup>4</sup>

- Combined JORC 2004 Resource of 1.5Mt @ 3.1g/t Au for 185koz<sup>2</sup>
- Historical drilling suggests both deposits remain open along strike and down-dip
- Open in all directions - in-fill drill program planned for FY21

## Gipps Hill and Janine <sup>5</sup>

- Mineralised shear-hosted quartz lode (up to 5m wide) intercepted in historical RC drilling with grades up to 12.1g/t Au<sup>3</sup>
- Surface sampling results of up to 13.7g/t Au from historical mullock dumps and 21.9g/t Au at Janine
- Gipps Hill open in all directions and untested at depth

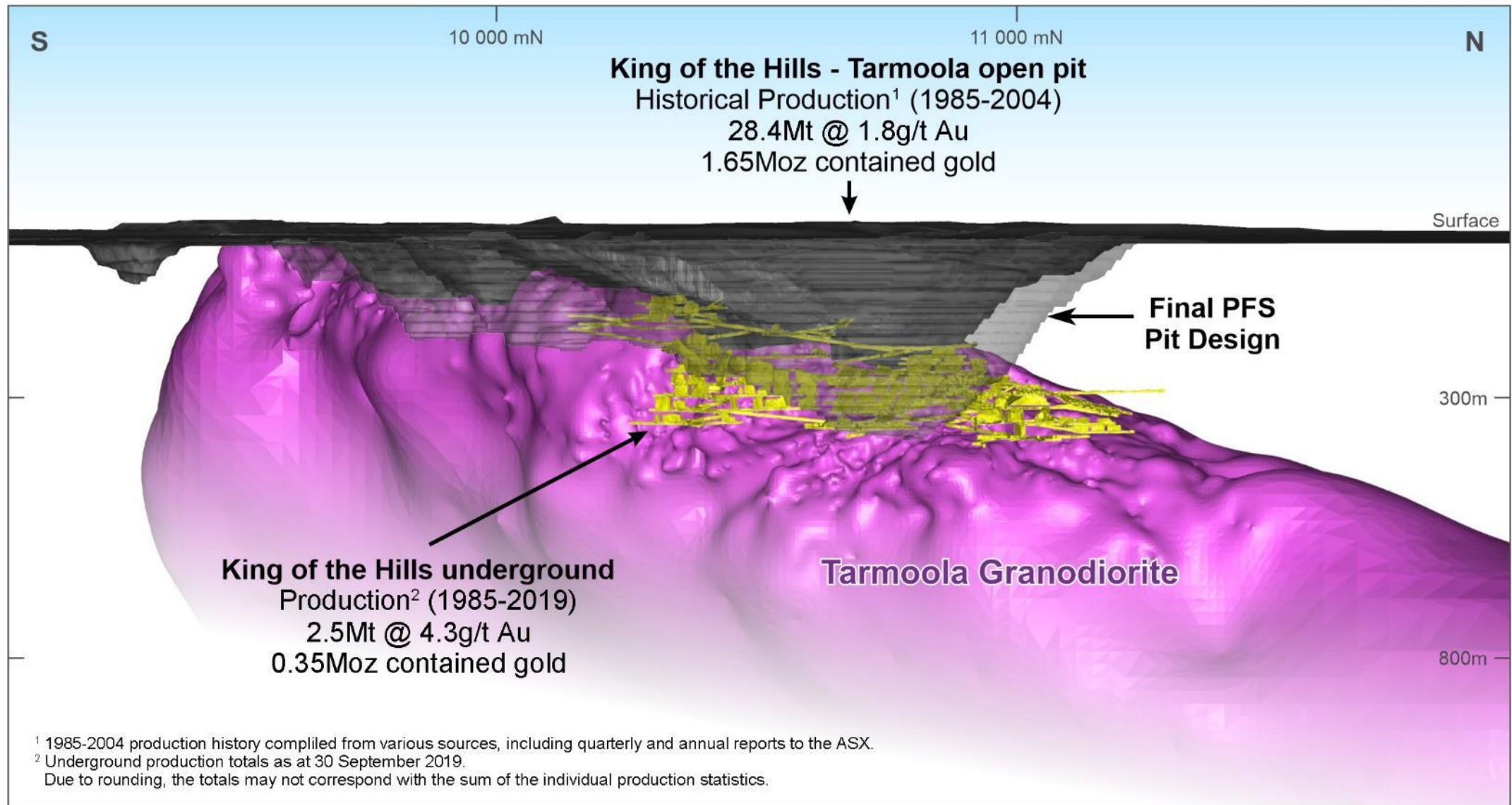
## Emperor and King of the West <sup>6</sup>

- Highly prospective strategic tenement package acquired from Kingwest in April 2020

1. Red 5 ASX Release: 10 February 2020
2. Red 5 ASX Release: 16 April 2018
3. Red 5 ASX Release: 3 April 2020
4. Red 5 ASX Release: 22 May 2020
5. Red 5 ASX Release: 13 December 2019
6. Red 5 ASX Release: 24 June 2020



# KOTH - potential to be Australia's next premier gold mine



# Advancing the King of the Hills Project

## Mar-20 Mineral Resource<sup>1</sup>

**4.1Moz**

(31% increase versus Mar-19)

## Aug-19 Pre-Feasibility Study<sup>2</sup>

|                                   |         |
|-----------------------------------|---------|
| • Ore Reserve (oz)                | 1.5Moz  |
| • Ore Milled (tonnes p.a.)        | 4.0     |
| • Grade (g/t)                     | 1.24    |
| • Recovery (%)                    | 92.8    |
| • Average Annual Production (koz) | 140,000 |
| • Strip Ratio (volume w:o)        | 6.1     |
| • Life of Mine (years)            | 10      |
| • Capital cost estimate (\$m)     | 218     |

## **FINAL FEASIBILITY STUDY DUE SEPT 2020 IS EVALUATING:**

- ✓ Bulk open pit and underground mine
- ✓ Additional satellite pits added including Rainbow and Cerebus-Eclipse
- ✓ 4mtpa stand-alone mill, with flexibility for future upgrade to 6mtpa



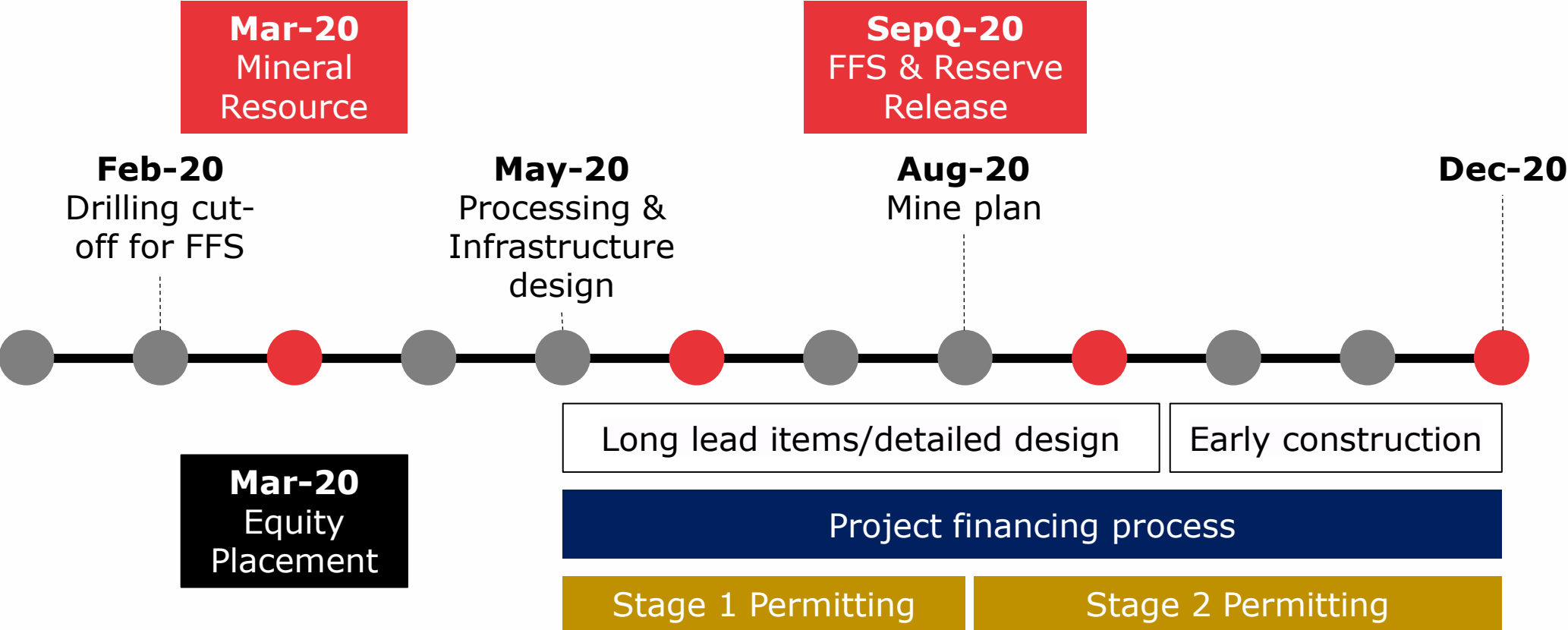
*Second-hand  
240-bed camp  
purchased in  
June Quarter  
2020*

1. Red 5 ASX Release: 19 March 2020

2. Red 5 ASX Release: 1 August 2019 for KOTH PFS (Open Pit and Rainbow)

# KOTH Final Feasibility Study indicative schedule\*

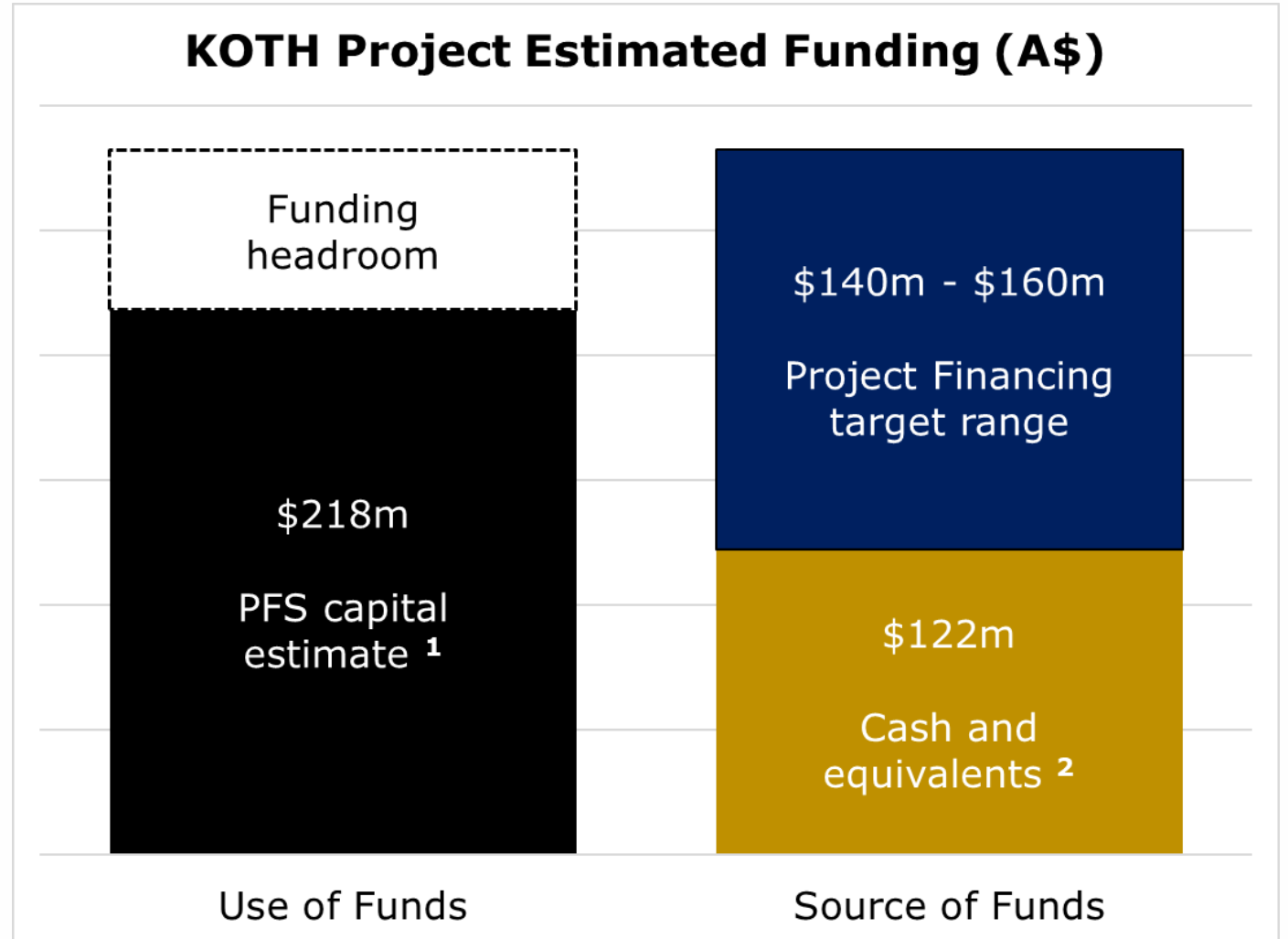
\* Subject to satisfactory completion of each milestone and all Board and Regulatory approvals





# KOTH project financing is underway

- Project Financing process has commenced with leading mining finance lenders
- Targeting A\$140m - A\$160m of Project Finance
- Low-risk brownfield project is attractive
  - High gold price environment
  - Project economics
  - Long reserve tail
  - Favorable mining jurisdiction
- Debt quantum to be determined following delivery of Final Feasibility Study
- Debt process de-risked by current cash levels

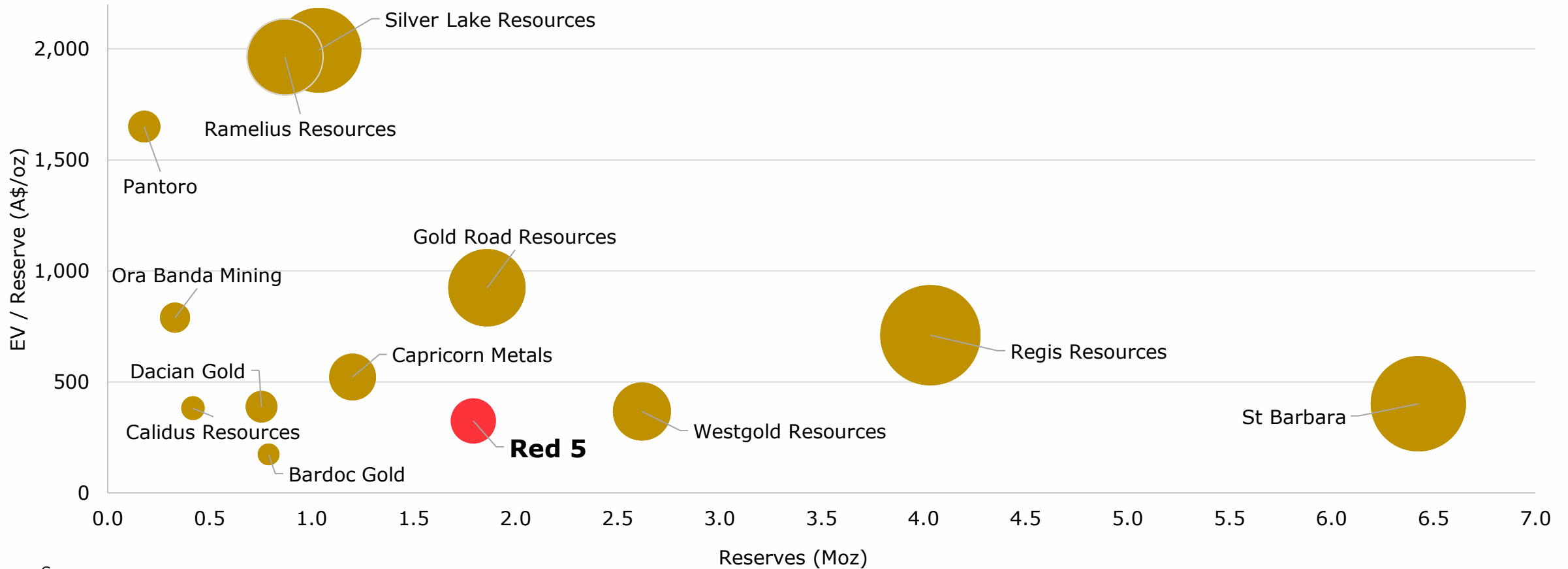


1. Red 5 ASX Release: 1 August 2019 for KOTH PFS (Open Pit and Rainbow)  
2. Red 5 ASX Release: 6 July 2020 "June 2020 Quarter Production Update"

# Red 5 EV/Reserve relative to its peers



- Valuation of WA based-gold companies<sup>1</sup>
- Bubble Size = Enterprise Value



Sources:  
1. S&P Capital IQ ; Goldnerds.com.au as at 10 August 2020





**Thank-you**





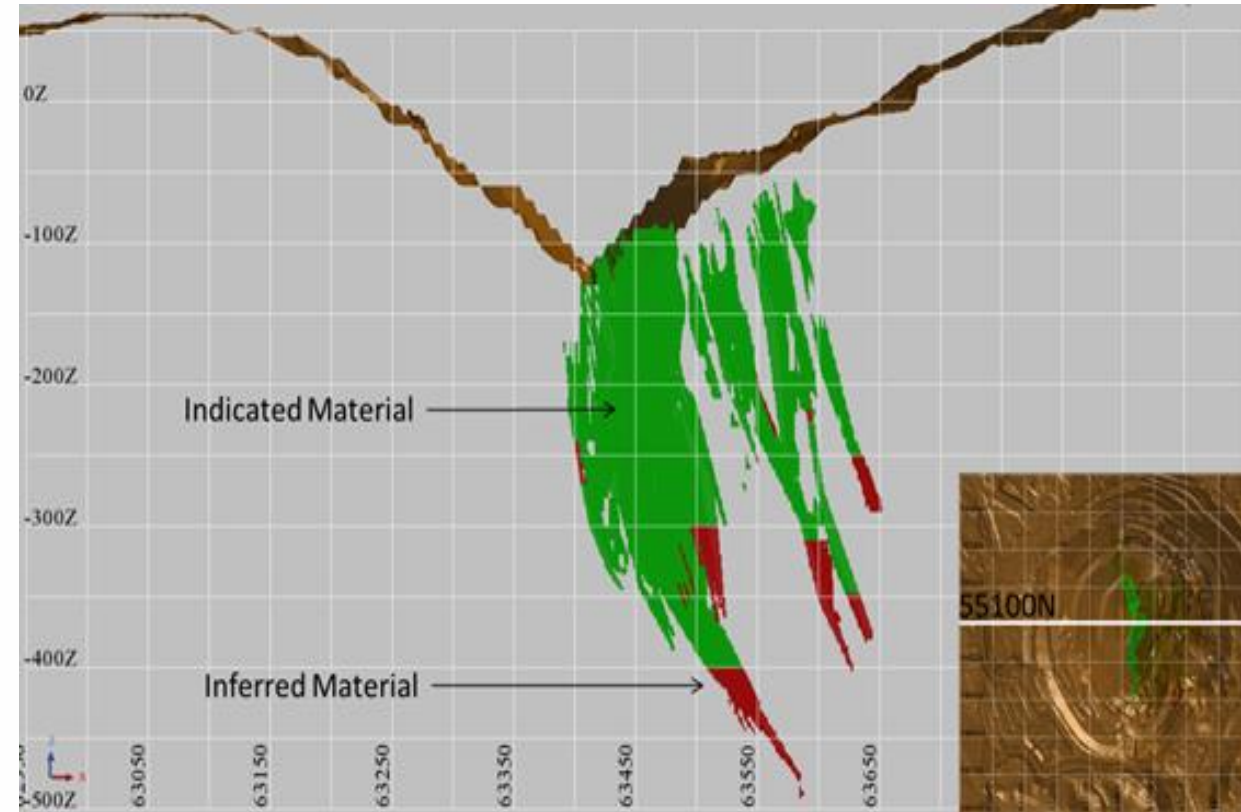
## Red 5 – appendix



# Siana Gold Project, Philippines



- The Siana Gold Mine, owned by Philippine affiliated company Greenstone Resources, suspended mine operations in April 2017
- Maintaining mill and pit dewatering to preserve value
- Greenstone Resources is now evaluating its preferred plan and options for Siana
- Siana is a valuable gold mining asset<sup>1</sup>:
  - *8 year Life-of-Mine plan - total production of 3.8Mt @ 4.6 g/t for 504koz*
  - *Average All-in Sustaining Cost of US\$790-US\$840/oz*
  - *Significant upside potential in Reserve*



Siana Underground:  
cross-section at 55100N

1. Red 5 ASX release "Siana Gold Project and Company Update", 20 June 2017

# KOTH 4.1Moz Mineral Resource<sup>1</sup> - increase of 31%

## Total Open Pit & Underground KOTH Resource as at March 2020

| Classification | Cut-off (g/t)  | Mining Method | Tonnes (000t) | Gold (g/t) | Contained Gold (000oz) |
|----------------|----------------|---------------|---------------|------------|------------------------|
| Indicated      | 0.4-1.0        | OP+UG         | 69,800        | 1.3        | 3,010                  |
| Inferred       | 0.4-1.0        | OP+UG         | 20,900        | 1.6        | 1,060                  |
| <b>Total</b>   | <b>0.4-1.0</b> | <b>OP+UG</b>  | <b>90,700</b> | <b>1.4</b> | <b>4,070</b>           |

### KOTH JORC 2012 All material within A\$2,100 Pit Shell

|              |            |           |               |            |              |
|--------------|------------|-----------|---------------|------------|--------------|
| Indicated    | 0.4        | OP        | 65,800        | 1.3        | 2,720        |
| Inferred     | 0.4        | OP        | 14,600        | 1.4        | 650          |
| <b>Total</b> | <b>0.4</b> | <b>OP</b> | <b>80,400</b> | <b>1.3</b> | <b>3,370</b> |

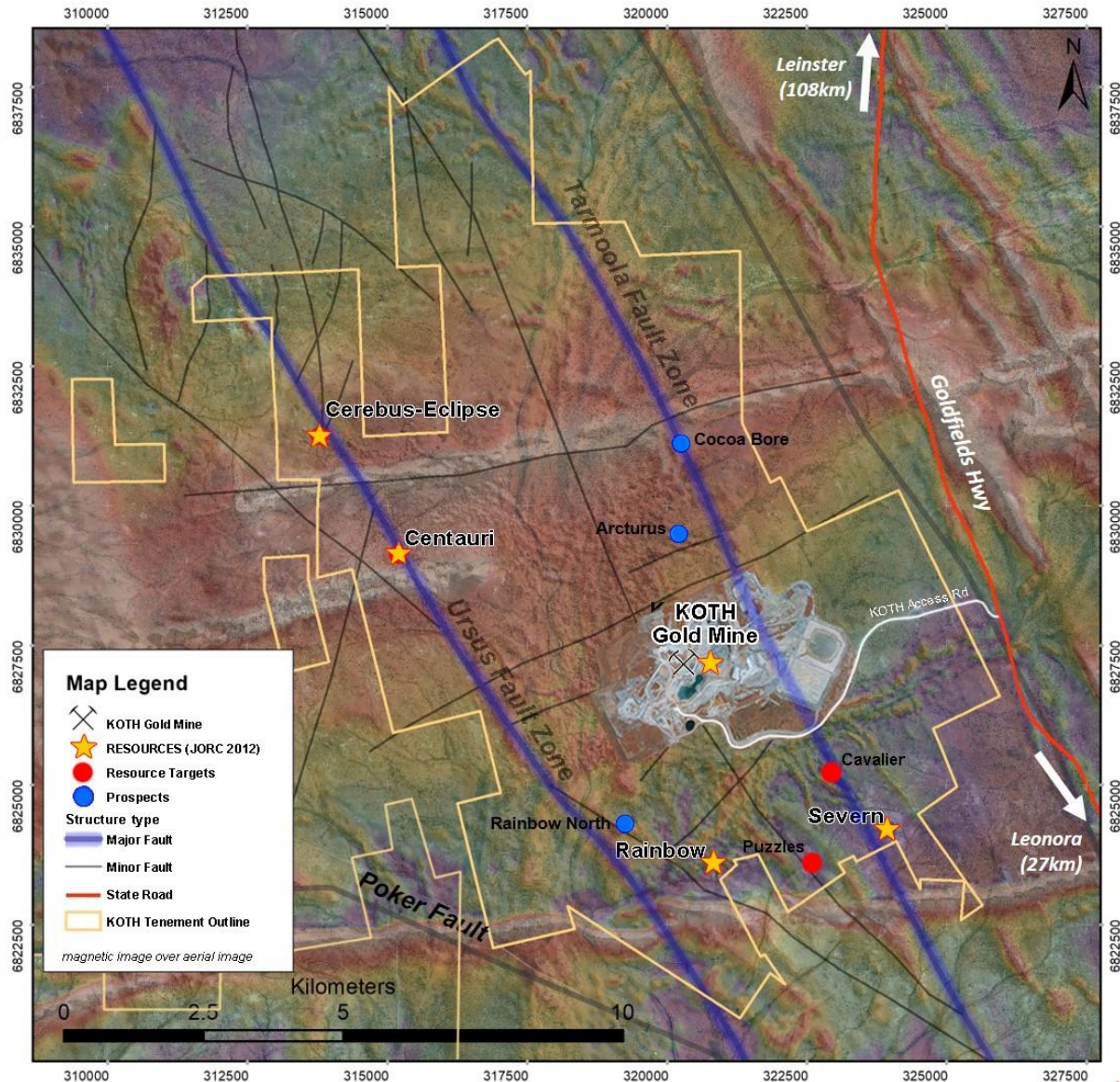
### KOTH JORC 2012 All material outside A\$2,100 Pit Shell

|              |            |           |               |            |            |
|--------------|------------|-----------|---------------|------------|------------|
| Indicated    | 1.0        | UG        | 4,000         | 2.2        | 290        |
| Inferred     | 1.0        | UG        | 6,300         | 2.0        | 410        |
| <b>Total</b> | <b>1.0</b> | <b>UG</b> | <b>10,300</b> | <b>2.1</b> | <b>700</b> |





# KOTH Satellite Deposits <sup>1</sup> – Resource of 308koz



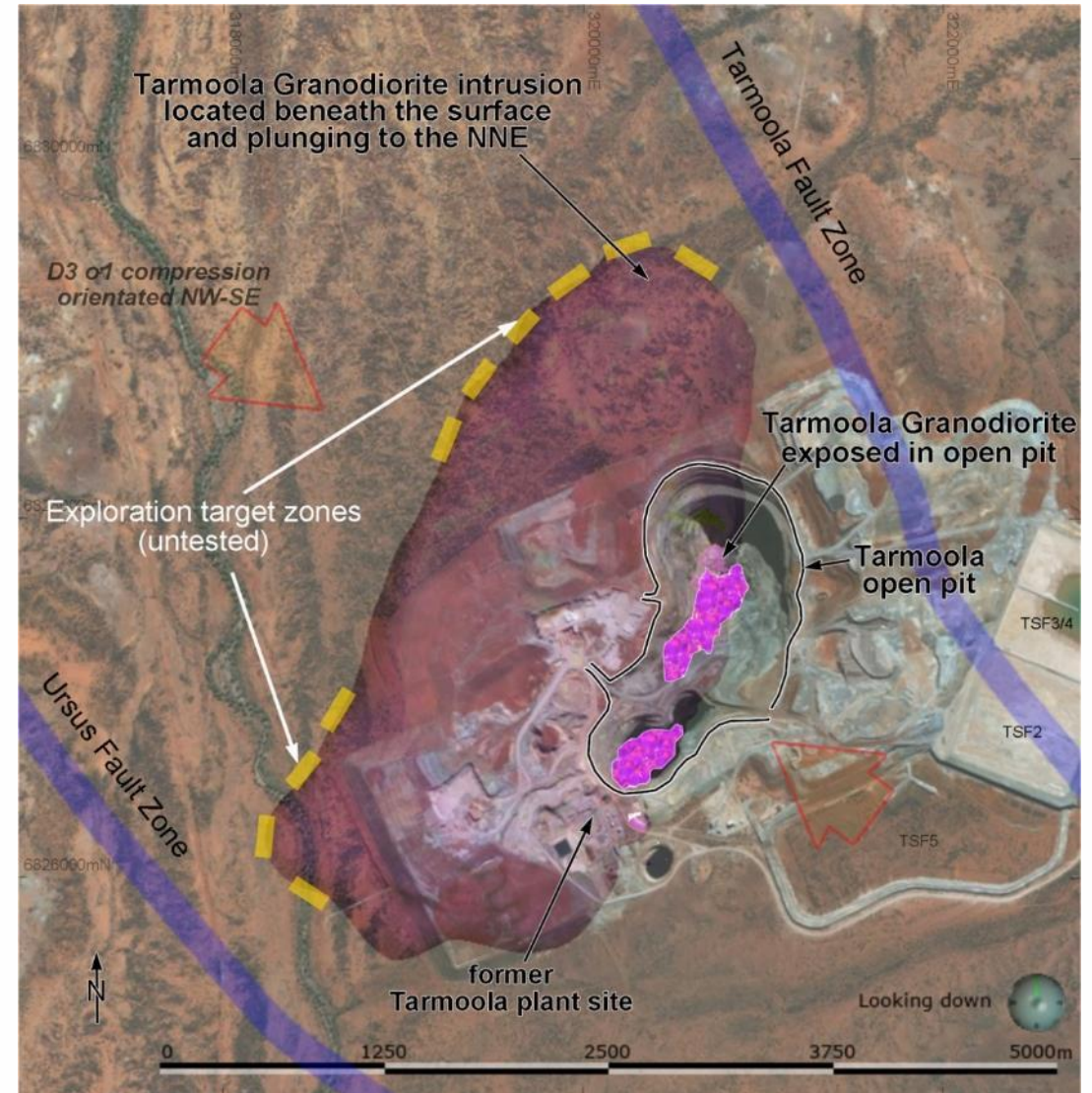
- Maiden JORC Mineral Resources announced in May 2020<sup>1</sup>:
  - Cerebus-Eclipse: Indicated and Inferred Resource of 2.8Mt @ 1.2g/t Au for 112,000oz
  - Centauri: Indicated and Inferred Resource of 1.7Mt @ 1.5g/t Au for 81,300oz
  
- Adds to the existing Rainbow and Severn deposits<sup>2</sup>
  - Rainbow: Indicated and Inferred Resource of 1.6Mt @ 1.3g/t Au for 67,000oz
  - Severn: Indicated and Inferred Resource of 0.9Mt @ 1.6g/t Au for 47,900oz
  
- Potential complementary mill feed and cash flow during the early stages of the stand-alone KOTH Project

1. Red 5 ASX Release: 6 May 2020  
 2. Red 5 ASX Release: 1 May 2019



# KOTH - future development to explore along contact

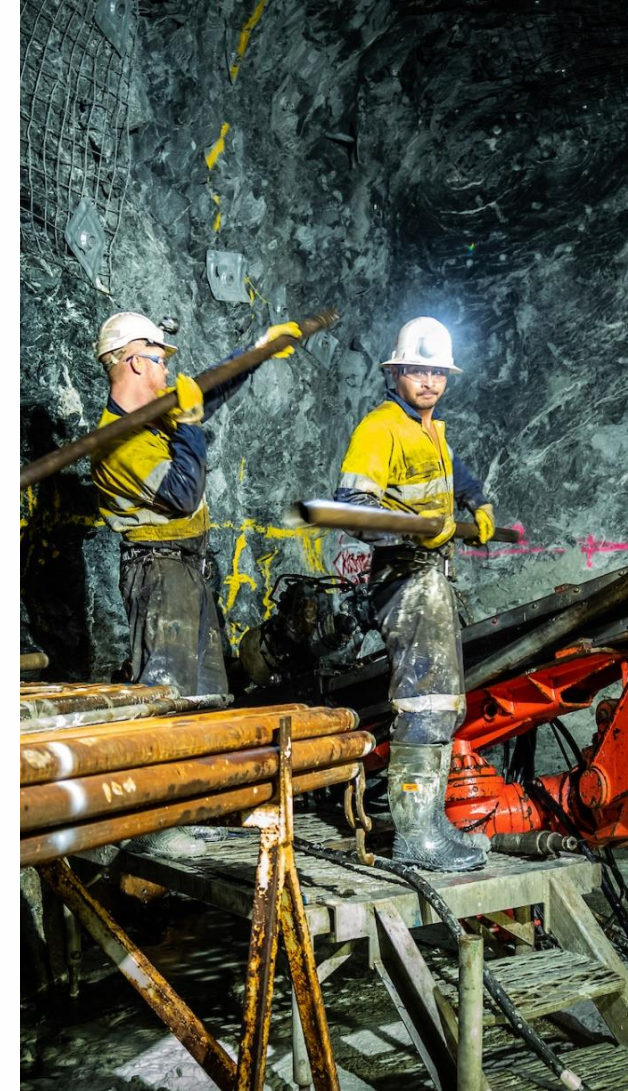
- Exploration aimed at increasing the Resource in total tonnage and potentially grade
- Granodiorite/ultramafic contact zone extends almost 12km around the granodiorite, with the potential to host gold mineralisation outside of the existing mine area
- Focus areas include:
  - *NW corner of granodiorite contact*
  - *Below Bulk Resource under southern end of open pit*
  - *Southern end of contact adjacent to Ursus Shear*
  - *Regional satellite deposits not currently included in the Resource*



# 2019 PFS-level KOTH capital cost<sup>1</sup>

|   | A\$M       |
|---|------------|
| 4Mtpa Process plant                                     | 92         |
| Infrastructure and tailings storage facilities          | 34         |
| Construction EPCM and direct and indirect costs         | 41         |
| <b>Sub-total</b>  | <b>166</b> |
| Owners Costs (project management, operations readiness) | 5          |
| <b>Sub-total</b>  | <b>171</b> |
| Contingency   | 23         |
| <b>Sub-total</b>  | <b>194</b> |
| Pre-Strip   | 24         |
| <b>Total (Real) capital cost</b>                        | <b>218</b> |

1. Red 5 ASX Release: 1 August 2019 for KOTH PFS.





# KOTH is in the Top 20 gold deposits in Australia

|                                      | Resources   |            |            | Reserves                             |             |            |            |
|--------------------------------------|-------------|------------|------------|--------------------------------------|-------------|------------|------------|
|                                      | Mt          | g/t        | Moz        | Mt                                   | g/t         | Moz        |            |
| Cadia                                | 3174.0      | 0.4        | 37.5       | Cadia                                | 1480.0      | 0.5        | 22.5       |
| Boddington                           | 931.1       | 0.6        | 17.4       | Boddington                           | 566.3       | 0.7        | 11.9       |
| Golden Mile (100%)                   | 272.6       | 1.4        | 12.0       | Golden Mile (100%)                   | 178.2       | 1.1        | 6.3        |
| Tanami                               | 65.5        | 4.3        | 9.1        | Tanami                               | 33.2        | 5.3        | 5.7        |
| Lake Cowal                           | 264.6       | 1.1        | 9.0        | Lake Cowal                           | 142.2       | 1.0        | 4.4        |
| Granny Smith                         | 49.4        | 5.2        | 8.3        | Tropicana                            | 65.7        | 1.8        | 3.7        |
| Tropicana                            | 136.2       | 1.8        | 7.7        | Gruyere 100%                         | 90.4        | 1.3        | 3.5        |
| Gruyere 100%                         | 153.7       | 1.3        | 6.6        | St Ives                              | 20.9        | 3.4        | 2.3        |
| Telfer                               | 188.9       | 0.9        | 5.4        | Fosterville                          | 3.0         | 21.8       | 2.1        |
| Jundee                               | 55.2        | 0.3        | 5.3        | Gwalia                               | 10.1        | 6.4        | 2.1        |
| Gwalia                               | 23.9        | 6.3        | 4.8        | Granny Smith                         | 12.5        | 5.2        | 2.1        |
| Carosue Dam Region                   | 72.0        | 2.0        | 4.6        | Jundee                               | 16.9        | 3.7        | 2.0        |
| St Ives                              | 34.5        | 4.0        | 4.4        | Carosue Dam Region                   | 33.0        | 1.9        | 2.0        |
| Sunrise Dam                          | 67.0        | 1.9        | 4.1        | Thunderbox Region                    | 33.0        | 1.9        | 1.7        |
| <b>King of the Hills<sup>1</sup></b> | <b>90.7</b> | <b>1.4</b> | <b>4.1</b> | <b>King of the Hills<sup>2</sup></b> | <b>36.0</b> | <b>1.3</b> | <b>1.4</b> |
| Fosterville                          | 20.8        | 5.7        | 3.8        | Telfer                               | 55.4        | 0.8        | 1.4        |
| Thunderbox Region                    | 57.0        | 1.7        | 3.2        | Big Bell                             | 13.7        | 2.8        | 1.2        |
| Agnew/EMU                            | 14.0        | 5.6        | 2.5        | Sunrise Dam                          | 17.8        | 1.9        | 1.1        |
| Mungari                              | 50.9        | 1.5        | 2.4        | Agnew/EMU                            | 4.6         | 5.2        | 0.8        |
| Big Bell                             | 27.6        | 2.7        | 2.4        | Mt Morgans (region)                  | 16.9        | 1.4        | 0.8        |
| Mt Morgans (region)                  | 32.0        | 2.0        | 2.1        | Mungari                              | 11.6        | 1.5        | 0.6        |
| Garden Well                          | 72.5        | 0.8        | 1.9        | Garden Well                          | 18.4        | 1.0        | 0.6        |

1. Red 5 ASX Release: 19 March 2020

2. Red 5 ASX Release: 1 August 2019 for KOTH PFS (Open Pit and Rainbow)

# Appendix – Australian top 20 gold deposits<sup>1</sup>

|   | Resources                           |             |             |              | Reserves      |             |             |
|---|-------------------------------------|-------------|-------------|--------------|---------------|-------------|-------------|
|   | Mt                                  | g/t         | Moz         |              | Mt            | g/t         | Moz         |
| <b>Cadia</b>  | <b>Newcrest</b>                     |             |             |              |               |             |             |
| Measured  | 32.0                                | 0.30        | 0.3         | Proven       |               |             |             |
| Indicated   | 3090.0                              | 0.37        | 36.5        | Probable     | 1480.0        | 0.45        | 21.6        |
| Inferred  | 52.0                                | 0.45        | 0.7         |              |               |             |             |
| <b>Total</b>  | <b>3174.0</b>                       | <b>0.37</b> | <b>37.5</b> | <b>Total</b> | <b>1480.0</b> | <b>0.47</b> | <b>22.5</b> |
| <b>Telfer</b>   | <b>Newcrest</b>                     |             |             |              |               |             |             |
| Measured  | 4.7                                 | 0.38        | 0.1         | Proven       | 4.7           | 0.38        | 0.1         |
| Indicated   | 168.4                               | 0.87        | 4.7         | Probable     | 50.7          | 0.81        | 1.3         |
| Inferred  | 15.8                                | 1.29        | 0.7         |              |               |             |             |
| <b>Total</b>  | <b>188.9</b>                        | <b>0.90</b> | <b>5.4</b>  | <b>Total</b> | <b>55.4</b>   | <b>0.77</b> | <b>1.4</b>  |
| Source: Newcrest Resource & Reserve release 13 Feb 2020 - Data as at 31 Dec 2019                            |                                     |             |             |              |               |             |             |
| <b>Boddington</b>   | <b>Newmont</b>                      |             |             |              |               |             |             |
| Measured  | 340.0                               | 0.65        | 7.1         | Proven       | 238.7         | 0.69        | 5.3         |
| Indicated   | 584.9                               | 0.54        | 10.2        | Probable     | 327.6         | 0.63        | 5.7         |
| Inferred  | 6.2                                 | 0.45        | 0.1         |              |               |             |             |
| <b>Total</b>  | <b>931.1</b>                        | <b>0.58</b> | <b>17.4</b> | <b>Total</b> | <b>566.3</b>  | <b>0.65</b> | <b>11.9</b> |
| Source: Newmont Resource & Reserve Supplement 2019 - Data as at 31 Dec 2019                                 |                                     |             |             |              |               |             |             |
| <b>Golden Mile (100%)</b>   | <b>Northern Star/Saracen</b>        |             |             |              |               |             |             |
| Measured  | 46.4                                | 1.30        | 1.9         | Proven       | 34.4          | 1.24        | 1.4         |
| Indicated   | 200.6                               | 1.26        | 8.1         | Probable     | 143.8         | 1.08        | 4.9         |
| Inferred  | 25.6                                | 2.33        | 1.9         |              |               |             |             |
| <b>Total</b>  | <b>272.6</b>                        | <b>1.37</b> | <b>12.0</b> | <b>Total</b> | <b>178.2</b>  | <b>1.10</b> | <b>6.3</b>  |
| Source: Newmont Resource & Reserve Supplement 2019 - Data as at 31 Dec 2019                                 |                                     |             |             |              |               |             |             |
| <b>Tanami</b>   | <b>Newmont</b>                      |             |             |              |               |             |             |
| Measured  | 13.2                                | 5.16        | 2.2         | Proven       | 13.0          | 5.18        | 2.2         |
| Indicated   | 37.7                                | 3.92        | 4.8         | Probable     | 20.2          | 5.39        | 3.5         |
| Inferred  | 14.6                                | 4.52        | 2.2         |              |               |             |             |
| <b>Total</b>  | <b>65.5</b>                         | <b>4.32</b> | <b>9.1</b>  | <b>Total</b> | <b>33.2</b>   | <b>5.32</b> | <b>5.7</b>  |
| Source: Newmont Resource & Reserve Supplement 2019 - Data as at 31 Dec 2019                                 |                                     |             |             |              |               |             |             |
| <b>Tropicana</b>  | <b>AngloGold/Independence Group</b> |             |             |              |               |             |             |
| Measured  | 34.3                                | 0.88        | 1.0         | Proven       | 19.8          | 1.15        | 0.7         |
| Indicated   | 84.0                                | 1.76        | 4.8         | Probable     | 45.9          | 2.04        | 3.0         |
| Inferred  | 17.9                                | 3.41        | 2.0         |              |               |             |             |
| <b>Total</b>  | <b>136.2</b>                        | <b>1.76</b> | <b>7.7</b>  | <b>Total</b> | <b>65.7</b>   | <b>1.77</b> | <b>3.7</b>  |
| Source: Independence Group Resource and Reserve Statement 30 January 2020 - Data as at 31 Dec 2018          |                                     |             |             |              |               |             |             |
| <b>Granny Smith</b>   | <b>Goldfields</b>                   |             |             |              |               |             |             |
| Measured  | 4.5                                 | 5.36        | 0.8         | Proven       | 0.8           | 4.81        | 0.1         |
| Indicated   | 31.5                                | 5.67        | 5.7         | Probable     | 11.6          | 5.21        | 1.9         |
| Inferred  | 13.3                                | 4.20        | 1.8         |              |               |             |             |
| <b>Total</b>  | <b>49.4</b>                         | <b>5.23</b> | <b>8.3</b>  | <b>Total</b> | <b>12.5</b>   | <b>5.18</b> | <b>2.1</b>  |
| Source: Goldfields 2019 Resource & Reserve Supplement - Data as at 31 Dec 2019                              |                                     |             |             |              |               |             |             |
| <b>Gruyere 100%</b>   | <b>Goldfields/Gold Road</b>         |             |             |              |               |             |             |
| Measured  | 14.8                                | 1.11        | 0.5         | Proven       | 14.7          | 1.06        | 0.5         |
| Indicated   | 129.4                               | 1.34        | 5.6         | Probable     | 75.7          | 1.27        | 3.1         |
| Inferred  | 9.4                                 | 1.66        | 0.5         |              |               |             |             |
| <b>Total</b>  | <b>153.7</b>                        | <b>1.34</b> | <b>6.6</b>  | <b>Total</b> | <b>90.4</b>   | <b>1.25</b> | <b>3.5</b>  |
| Source: Goldfields 2019 Resource & Reserve Supplement - Data as at 31 Dec 2019                              |                                     |             |             |              |               |             |             |
| <b>St Ives</b>  | <b>Goldfields</b>                   |             |             |              |               |             |             |
| Measured  | 5.8                                 | 1.87        | 0.3         | Proven       | 5.0           | 1.50        | 0.2         |
| Indicated   | 21.0                                | 4.13        | 3.1         | Probable     | 15.9          | 4.00        | 2.0         |
| Inferred  | 7.7                                 | 3.58        | 0.9         |              |               |             |             |
| <b>Total</b>  | <b>34.5</b>                         | <b>3.97</b> | <b>4.4</b>  | <b>Total</b> | <b>20.9</b>   | <b>3.40</b> | <b>2.3</b>  |
| Source: Goldfields 2019 Resource & Reserve Supplement - Data as at 31 Dec 2019                              |                                     |             |             |              |               |             |             |
| <b>Agnew/EMU</b>  | <b>Goldfields</b>                   |             |             |              |               |             |             |
| Measured  | 0.3                                 | 3.07        | 0.0         | Proven       | 0.3           | 2.35        | 0.0         |
| Indicated   | 8.2                                 | 6.01        | 1.6         | Probable     | 4.3           | 5.35        | 0.8         |
| Inferred  | 5.5                                 | 5.16        | 0.9         |              |               |             |             |
| <b>Total</b>  | <b>14.0</b>                         | <b>5.60</b> | <b>2.5</b>  | <b>Total</b> | <b>4.6</b>    | <b>5.17</b> | <b>0.8</b>  |
| Source: Goldfields 2019 Resource & Reserve Supplement - Data as at 31 Dec 2019                              |                                     |             |             |              |               |             |             |
| <b>Lake Cowal</b>   | <b>Evolution</b>                    |             |             |              |               |             |             |
| Measured  | 42.8                                | 0.63        | 0.9         | Proven       | 42.8          | 0.63        | 0.9         |
| Indicated   | 181.6                               | 1.04        | 6.6         | Probable     | 99.4          | 1.12        | 3.6         |
| Inferred  | 40.2                                | 161.00      | 2.1         |              |               |             |             |
| <b>Total</b>  | <b>264.6</b>                        | <b>1.06</b> | <b>9.0</b>  | <b>Total</b> | <b>142.2</b>  | <b>0.97</b> | <b>4.4</b>  |
| <b>Mungari</b>  | <b>Evolution</b>                    |             |             |              |               |             |             |
| Measured  | 1.1                                 | 3.22        | 0.1         | Proven       | 1.0           | 2.47        | 0.1         |
| Indicated   | 40.2                                | 1.31        | 1.7         | Probable     | 10.6          | 1.43        | 0.5         |
| Inferred  | 9.7                                 | 1.93        | 0.6         |              |               |             |             |
| <b>Total</b>  | <b>50.9</b>                         | <b>1.47</b> | <b>2.4</b>  | <b>Total</b> | <b>11.6</b>   | <b>1.52</b> | <b>0.6</b>  |
| Source: Evolution Resource & Reserve release 12 February 2020 - Data as at 31 Dec 2019, Cowell 23 July 2020 |                                     |             |             |              |               |             |             |

|   | Resources            |             |            |              | Reserves    |              |            |
|---|----------------------|-------------|------------|--------------|-------------|--------------|------------|
|   | Mt                   | g/t         | Moz        |              | Mt          | g/t          | Moz        |
| <b>Sunrise Dam</b>  | <b>AngloGold</b>     |             |            |              |             |              |            |
| Measured  | 28.9                 | 1.54        | 1.4        | Proven       | 11.2        | 1.39         | 0.5        |
| Indicated   | 25.5                 | 2.05        | 1.7        | Probable     | 6.6         | 3.60         | 0.6        |
| Inferred  | 12.6                 | 2.37        | 1.0        |              |             |              |            |
| <b>Total</b>  | <b>67.0</b>          | <b>1.89</b> | <b>4.1</b> | <b>Total</b> | <b>17.8</b> | <b>1.93</b>  | <b>1.1</b> |
| Source: AngloGold Resource & Reserve Supplement 2019 - Data as at 31 Dec 2019               |                      |             |            |              |             |              |            |
| <b>Garden Well</b>  | <b>Regis</b>         |             |            |              |             |              |            |
| Measured  | 6.6                  | 0.72        | 0.2        | Proven       | 5.5         | 0.73         | 0.1        |
| Indicated   | 52.6                 | 0.88        | 1.5        | Probable     | 12.9        | 1.05         | 0.4        |
| Inferred  | 13.2                 | 0.72        | 0.3        |              |             |              |            |
| <b>Total</b>  | <b>72.5</b>          | <b>0.83</b> | <b>1.9</b> | <b>Total</b> | <b>18.4</b> | <b>0.95</b>  | <b>0.6</b> |
| Source: Regis Resource & Reserve Statement 19 July 2019 - Data as at 31 Mar 2019            |                      |             |            |              |             |              |            |
| <b>Carosue Dam Region</b>   | <b>Saracen</b>       |             |            |              |             |              |            |
| Measured  | 9.8                  | 2.00        | 0.6        | Proven       | 3.3         | 0.90         | 0.1        |
| Indicated   | 44.0                 | 2.00        | 2.8        | Probable     | 29.0        | 2.00         | 1.9        |
| Inferred  | 18.0                 | 2.10        | 1.2        |              |             |              |            |
| <b>Total</b>  | <b>72.0</b>          | <b>2.00</b> | <b>4.6</b> | <b>Total</b> | <b>33.0</b> | <b>1.90</b>  | <b>2.0</b> |
| <b>Thunderbox Region</b>  | <b>Saracen</b>       |             |            |              |             |              |            |
| Measured  | 10.0                 | 1.70        | 0.5        | Proven       | 7.0         | 1.50         | 0.3        |
| Indicated   | 38.0                 | 1.80        | 2.3        | Probable     | 26.0        | 1.70         | 1.4        |
| Inferred  | 6.9                  | 1.90        | 0.4        |              |             |              |            |
| <b>Total</b>  | <b>57.0</b>          | <b>1.70</b> | <b>3.2</b> | <b>Total</b> | <b>33.0</b> | <b>1.90</b>  | <b>1.7</b> |
| Source: Saracen Resource and Reserve Release 4 August 2020 - Data as at 30 Jun 2020         |                      |             |            |              |             |              |            |
| <b>Gwalia</b>   | <b>St Barbara</b>    |             |            |              |             |              |            |
| Measured  | 5.0                  | 7.30        | 1.2        | Proven       | 2.2         | 8.00         | 0.6        |
| Indicated   | 17.5                 | 6.00        | 3.4        | Probable     | 7.9         | 5.90         | 1.5        |
| Inferred  | 1.1                  | 5.50        | 0.2        |              |             |              |            |
| <b>Total</b>  | <b>23.9</b>          | <b>6.30</b> | <b>4.8</b> | <b>Total</b> | <b>10.1</b> | <b>6.40</b>  | <b>2.1</b> |
| Source: St Barbara Reserve & Reserve Statement 21 August 2019 - Data as at 30 June 2019     |                      |             |            |              |             |              |            |
| <b>Jundee</b>   |                      |             |            |              |             |              |            |
| Measured  | 2.1                  | 1.40        | 0.1        | Proven       | 2.1         | 1.40         | 0.1        |
| Indicated   | 38.9                 | 3.20        | 4.5        | Probable     | 14.8        | 4.10         | 1.9        |
| Inferred  | 14.2                 | 3.20        | 4.1        |              |             |              |            |
| <b>Total</b>  | <b>55.2</b>          | <b>0.30</b> | <b>5.3</b> | <b>Total</b> | <b>16.9</b> | <b>3.70</b>  | <b>2.0</b> |
| Source: Northern Star Resource and Reserve Release 13 August 2020 - Data as at 30 June 2020 |                      |             |            |              |             |              |            |
| <b>Kanowna</b>  |                      |             |            |              |             |              |            |
| Measured  | 0.0                  | 0.00        | 0.0        | Proven       | 2.5         | 3.00         | 0.2        |
| Indicated   | 12.3                 | 2.90        | 1.1        | Probable     | 5.8         | 2.60         | 0.5        |
| Inferred  | 8.7                  | 2.60        | 0.7        |              |             |              |            |
| <b>Total</b>  | <b>24.2</b>          | <b>2.80</b> | <b>2.2</b> | <b>Total</b> | <b>8.2</b>  | <b>2.70</b>  | <b>0.7</b> |
| Source: Northern Star Resource and Reserve Release 13 August 2020 - Data as at 30 June 2020 |                      |             |            |              |             |              |            |
| <b>Mt Morgans (region)</b>  | <b>Dacian</b>        |             |            |              |             |              |            |
| Measured  | 6.3                  | 1.20        | 0.2        | Proven       | 6.0         | 0.90         | 0.2        |
| Indicated   | 20.4                 | 1.90        | 1.3        | Probable     | 10.9        | 1.70         | 1.6        |
| Inferred  | 5.2                  | 3.40        | 0.6        |              |             |              |            |
| <b>Total</b>  | <b>32.0</b>          | <b>2.00</b> | <b>2.1</b> | <b>Total</b> | <b>16.9</b> | <b>1.40</b>  | <b>0.8</b> |
| Source: Dacian Resource & Reserve release 27 February 2020 - Data as at 31 December 2019    |                      |             |            |              |             |              |            |
| <b>Big Bell</b>   | <b>Westgold</b>      |             |            |              |             |              |            |
| Measured  | 2.0                  | 3.48        | 0.2        | Proven       | 1.9         | 3.06         | 0.2        |
| Indicated   | 20.1                 | 2.63        | 1.7        | Probable     | 11.8        | 2.71         | 1.0        |
| Inferred  | 5.4                  | 2.43        | 0.4        |              |             |              |            |
| <b>Total</b>  | <b>27.6</b>          | <b>2.65</b> | <b>2.4</b> | <b>Total</b> | <b>13.7</b> | <b>2.76</b>  | <b>1.2</b> |
| Source: Westgold Resource & Reserve Release 13 Aug 2020 - Data as at 30 Jun 2020            |                      |             |            |              |             |              |            |
| <b>Fosterville</b>  | <b>Kirkland Lake</b> |             |            |              |             |              |            |
| Measured  |                      |             |            | Proven       |             |              |            |
| Indicated   | 12.3                 | 5.30        | 2.1        | Probable     | 3.0         | 21.80        | 2.1        |
| Inferred  | 8.5                  | 6.40        | 1.7        |              |             |              |            |
| <b>Total</b>  | <b>20.8</b>          | <b>5.73</b> | <b>3.8</b> | <b>Total</b> | <b>3.0</b>  | <b>21.80</b> | <b>2.1</b> |
| Source: Kirkland Lake presentation February 2020 - Data as at 31 December 2019              |                      |             |            |              |             |              |            |
| <b>King of the Hills</b>  | <b>Red 5</b>         |             |            |              |             |              |            |
| Measured  |                      |             |            | Proven       |             |              |            |
| Indicated   | 69.8                 | 1.30        | 3.0        | Probable     | 36.0        | 1.25         | 1.4        |
| Inferred  | 20.9                 | 1.60        | 1.1        |              |             |              |            |
| <b>Total</b>  | <b>90.7</b>          | <b>1.40</b> | <b>4.1</b> | <b>Total</b> | <b>36.0</b> | <b>1.25</b>  | <b>1.4</b> |
| Source: Red 5 Reserve Release 2 August 2019, Resource update 19 March 2020                  |                      |             |            |              |             |              |            |

1. Sources detailed in the table